

CAN-AM



**Modular Metal Cabinetry
of the highest quality
since 1979**



Product Line Cards

Product Line Card A	Drawer, Door, and Pullout Cabinets	Page 4
Product Line Card B	Pullout and Narrow Cabinets	Page 5
Product Line Card C	Pullout Cabinet Accessories, Mica and Metal Tops, and Bridge Shelves	Page 6
Product Line Card D	Wheels, Legs, Caddies, and Media/In-Drawer Accessories	Page 7

Themed Pages

Themed Page 1	CD / DVD / Blu-Ray Storage	Page 8
Themed Page 2	Stereo / AV / Electronic Component Cabinets	Page 9
Themed Page 3	TV Stand / Home Theater Furniture	Page 10
Themed Page 4	Home Office / Computer Furniture	Page 11
Themed Page 5	Desks	Page 12
Themed Page 6	File Cabinets	Page 13
Themed Page 7	Lifestyle Furniture	Page 14

Drawer Cabinets - Standard Width - 37-3/4"

MC2D14	2 Drawer Cabinet with 6" drawers	Page 15
MC3D20	3 Drawer Cabinet with 6" drawers	Page 16
MC3D27	3 Drawer Cabinet with 8" drawers	Page 17
MC4D27	4 Drawer Cabinet with 6" drawers	Page 18
MC2D20	2 Drawer Cabinet with 9" drawers	Page 19
HFCAB14	2 Drawer Lateral File Cabinet with 12" hanging file drawers - 14-1/2" high	Page 20
HFCAB27	2 Drawer Lateral File Cabinet with 12" hanging file drawers - 27" high	Page 21
CH2D20	2 Drawer Cabinet with one 6" drawer & one 12" hanging file drawer	Page 22
COM3D14	3 Drawer Cabinet with two narrow 6" drawers & one 12" hanging file drawer	Page 23
COM3D27	3 Drawer Cabinet with two 6" drawers & one 12" hanging file drawer	Page 24

Drawer Cabinets - Narrow (All Narrow cabinets are 23-1/2" wide)

M2D14X24	Narrow 2 Drawer Cabinet with 6" drawers	Page 25
M3D20X24	Narrow 3 Drawer Cabinet with 6" drawers	Page 26
M2D20X24	Narrow 2 Drawer Cabinet with 9" drawers	Page 27
CH20X24	Narrow 2 Drawer Cabinet with one 6" drawer & one 12" hanging file drawer	Page 28
M4D27X24	Narrow 4 Drawer Cabinet with 6" drawers	Page 29
M3D27X24	Narrow 3 Drawer Cabinet with 8" drawers	Page 30
HF27X24	Narrow 2 Drawer Lateral File Cabinet with two 12" hanging file drawers	Page 31
CH27X24	Narrow 3 Drawer Cabinet with two 6" drawers & one 12" hanging file drawer	Page 32

Combination Cabinets

COM2D20	Cabinet with two 6" drawers, a 5" high AV shelf, and a reinforced top	Page 33
FCOM2D27	Combination Flip Door Pullout Area plus two 6" drawers	Page 34
FCOM1D27	Combination Flip Door Pullout Area plus one 12" hanging file drawer	Page 35
F2D27X24	Narrow Flip Door Pullout Area plus two 6" drawers	Page 36
F1D27X24	Narrow Flip Door Pullout Area plus 12" hanging file drawer	Page 37

Two Door Storage Cabinets

CABDR16	2 Door Cabinet	Page 38
CABSLD16	Sliding Door Cabinet	Page 39
WALL24	Wall-Hanging 2 Door Cabinet	Page 40

See next page for Cabinet Accessories

(Continued)

Pullout Cabinets - Standard Width

CAB14 / FDCAB 14	Pullout Cabinet / Flip Door Pullout Cabinet - 14-1/2" high	Page 41
CAB20 / FDCAB20	Pullout Cabinet / Flip Door Pullout Cabinet - 20-1/2" high	Page 42
CAB20D / FCAB20D	Deep Pullout Cabinet / Deep Flip Door Pullout Cabinet - 20-1/2" high	Page 43
CAB27 / CABDR27	Pullout Cabinet / 2 Door Locking Pullout Cabinet - 27" high	Page 44
CAB29 / CABDR29	Pullout Cabinet / 2 Door Locking Pullout Cabinet - 29" high	Page 45
CAB35 / CABDR35	Pullout Cabinet / 2 Door Locking Pullout Cabinet - 35" high	Page 46

Pullout Cabinets - Narrow

FC14X24	Narrow Flip Door Pullout Cabinet	Page 48
FC20X24	Narrow Flip Door Pullout Cabinet	Page 49

Shelves & Drawers - For Pullout Cabinets

ASHELF / PUSHE / MINIDRW	Standard Width Stationary Shelf or Base Shelf / Pullout Shelf / Mini Drawers	Page 47
ASHELF24 / PUSHE24 / MINDW24	Narrow Width Stationary Shelf or Base shelf / Pullout Shelf / Mini Drawers	Page 50

Mica Tops & Bridge / Shelf

TOP38 / 75 / 24 / 47 / 61	Mica Tops for various lengths	Page 51
BRG38	Bridge Support Unit or Floating Shelf - used as a shelf or with a Mica Top	Page 52

Metal Tops

MTOP40 / 77 / 26 / 49 / 63	Metal Tops for various lengths	Page 53
MDTOP	Metal Desk Top or Deep "Bar Style" Top with 9" rear overhang	Page 54
TTOP40	Metal Island / Coffee Table Top - covers two standard width cabinets back to back	Page 55

Wheels, Legs & Heavy Duty Caddies

CADDY24	Narrow Single Length Caddy	Page 56
CADDY38	Single Length Caddy, width of one standard cabinet	Page 56
CADDY47	Double Length Caddy, width of two narrow cabinets	Page 56
CADDY61	Double Caddy, width of one standard & one narrow cabinet	Page 56
CADDY75	Double Length Caddy, width of two standard cabinets	Page 56
CADWRAP	Caddy Wrap for CADDY38 / CAD38BK	Page 57
CADWRAP2	Caddy Wrap for CADDY75 / CAD75BK	Page 57
CADEL38	Elevated Caddy, width of one standard cabinet, chrome wheels	Page 58
LEGSW	Set of 4 Screw-In Wood Legs - 2", 3", 4", 5" or 6" heights	Page 59
LEGSM	Set of 4 Screw-In Metal Legs - 2", 3", 4", 5" or 6" heights	Page 59
WHEELS	Set of 4 Screw-In Wheels - for single cabinets only	Page 60

Media Accessories / In-Drawer Accessories

DIVBS12 / 18 / 24	Dividers & Backstops	Page 61
INDX	Index Plates with blank and alphabetic labels, sold individually	Page 61
LABEL35 / 55	Drawer Label Holders	Page 62

More Information

GoConfigure	Flash Drag-N-Drop Tool To Design Your Own Configuration	Page 63
Features	Powder Coated Finish	Page 64
	Safety, Dependability, and Security	Page 65
	Other Features (Natural Cooling, Dust-Free, Eco-Friendly, Recyclable...)	Page 66
Cabinet Color Chart	18 Powder Coat Cabinet Colors	Page 67
Mica Top Color Chart	11 Mica Top Finishes	Page 68
Prices and Specifications	Cabinets	Page 69
	Cabinet Accessories	Page 70

Product Line Card - A

See Page Listed Next To Module for Details



38
Page

***CABDR16 - Hinged Door Cabinet**
37.75" W x 16.5" H x 20" D ~ 36 lb

**These Cabinets have reverse stacking dimples as opposed to leveling feet, so they cannot be used as a base cabinet*



39
Page

***CABSLD16 - Sliding Door Cabinet**
37.75" W x 16.5" H x 20" D ~ 40 lb



40
Page

WALL24 - Wall-Hanging Cabinet
37.75" W x 24" H x 12" D ~ 40 lb

WALLSH12 - Adjustable Shelf
35.25" W x 1" H x 11" D ~ 7 lb



15
Page

MC2D14 - 2 Drawer Cabinet - 6" drawers
(540 to 2000 CDs / 240 DVDs or Blu-ray)
37.75" W x 14.5" H x 20" D ~ 70 lb



23
Page

COM3D14 - 3 Drawer Combination Cabinet
one 12" high file drawer and two 6" drawers
37.75" W x 14.5" H x 20" D ~ 78 lb



20
Page

HFCAB14 - 2 Drawer File Cabinet
with two 12" high file drawers
37.75" W x 14.5" H x 20" D ~ 73 lb



16
Page

MC3D20 - 3 Drawer Cabinet - 6" drawers
(810 to 3000 CDs / 360 DVDs or Blu-ray)
37.75" W x 20.5" H x 20" D ~ 95 lb



33
Page

COM2D20 - 2 Drawer Combo Cabinet
6" drawers plus a 5" high AV shelf
37.75" W x 20.5" H x 20" D ~ 80 lb



19
Page

MC2D20 - 2 Drawer Cabinet - 9" drawers
Drawers are divisible by 4, 5 or 6 rows
37.75" W x 20.5" H x 20" D ~ 95 lb



18
Page

MC4D27 - 4 Drawer Cabinet - 6" drawers
(1,080 to 4000 CDs / 480 DVDs or Blu-ray)
37.75" W x 26.75" H x 20" D ~ 120 lb



24
Page

COM3D27 - 3 Drawer Combo Cabinet
12" file drawer and two 6" high drawers
37.75" W x 26.75" H x 20" D ~ 95 lb



22
Page

CH2D20 - 2 Drawer Combo Cabinet
12" file drawer and one 6" high drawer
37.75" W x 20.5" H x 20" D ~ 85 lb



21
Page

HFCAB27 - 2 Drawer Lateral File Cabinet
with two 12" high hanging file drawers
37.75" W x 26.75" H x 20" D ~ 90 lb



17
Page

MC3D27 - 3 Drawer Cabinet - 8" drawers
Drawers are divisible by 4, 5 or 6 rows
37.75" W x 26.75" H x 20" D ~ 100 lb



44
Page

CABDR27 - 2 Door Pullout Cabinet
Sized like all 27 Series Cabinets
37.75" W x 26.75" H x 20" D ~ 62 lb



41
Page

FDCAB14 - Flip Door Pullout Cabinet
37.75" W x 14.5" H x 20" D ~ 45 lb
CAB14 Pullout Cabinet without door
37.75" W x 14.5" H x 20" D ~ 34 lb



42
Page

FDCAB20 - Flip Door Pullout Cabinet
37.75" W x 20.5" H x 20" D ~ 54 lb
CAB20 - Pullout Cabinet without door
37.75" W x 20.5" H x 20" D ~ 39 lb



43
Page

FCAB20D - Deep pullout flip-door cabinet
37.75" W x 20.5" H x 23" D ~ 60 lb
CAB20D - Deep pullout cabinet (no door)
37.75" W x 20.5" H x 23" D ~ 45 lb

See Page Listed Next To Module for Details

Pullout cabinets feature as series of slots. Sliders and shelf brackets snap into the slots and the shelves and drawers snap onto the sliders or brackets. Stationary shelves, pullout shelves and mini drawers are optional.



45
Page

CABDR29 - 2 Door Locking Pullout Cabinet

Sized like any two 14" Cabinets stacked

37.75" W x 29" H x 20" D ~ 65 lb

CAB29 Pullout Cabinet without doors

37.75" W x 29" H x 20" D ~ 50 lb



46
Page

CABDR35 - 2 Door Locking Pullout Cabinet

Sized like a 14" and a 20" Cabinet stacked

37.75" W x 35" H x 20" D ~ 70 lb

CAB35 Pullout Cabinet without doors

37.75" W x 35" H x 20" D ~ 55 lb



35
Page

FCOM1D27 - Combo Flip-Door Pullout Cabinet plus one 12" hanging file drawer

37.75" W x 26.75" H x 20" D ~ 85 lb



34
Page

FCOM2D27 - Combo Flip-Door Pullout Cabinet plus two 6" drawers

37.75" W x 26.75" H x 20" D ~ 90 lb



25
Page

M2D14X24 - Narrow 2 Drawer Cabinet with 6" drawers (300 CDs / 120 DVDs)

37.75" W x 29" H x 20" D ~ 65 lb

23.5" W x 14.5" H x 20" D ~ 50 lb



26
Page

M3D20X24 - Narrow 3 Drawer Cabinet with 6" drawers (450 CDs / 180 DVDs)

37.75" W x 35" H x 20" D ~ 70 lb

23.5" W x 20.5" H x 20" D ~ 64 lb



27
Page

M2D20X24 - Narrow 2 Drawer Cabinet with two 9" high drawers

37.75" W x 35" H x 20" D ~ 70 lb

23.5" W x 20.5" H x 20" D ~ 60 lb



28
Page

CH20X24 - Narrow Combo Cabinet with one 12" file and one 6" drawer

37.75" W x 35" H x 20" D ~ 70 lb

23.5" W x 20.5" H x 20" D ~ 60 lb



29
Page

M4D27X24 - Narrow 4 drawer cabinet with 6" drawers (600 CDs / 240 DVDs)

37.75" W x 35" H x 20" D ~ 70 lb

23.5" W x 26.75" H x 20" D ~ 78 lb



30
Page

M3D27X24 - Narrow 3 Drawer Cabinet with three 8" high drawers

37.75" W x 35" H x 20" D ~ 70 lb

23.5" W x 26.75" H x 20" D ~ 70 lb



31
Page

HF27X24 - Narrow File Cabinet with two 12" high hanging file drawers

37.75" W x 35" H x 20" D ~ 70 lb

23.5" W x 26.75" H x 20" D ~ 65 lb



32
Page

CH27X24 - Narrow Combo Cabinet one 12" file and two 6" drawers

37.75" W x 35" H x 20" D ~ 70 lb

23.5" W x 26.75" H x 20" D ~ 70 lb



37
Page

F1D27X24 - Narrow Combo Flip-Door Pullout Cabinet with one 12" file drawer

37.75" W x 35" H x 20" D ~ 70 lb

23.5" W x 26.75" H x 20" D ~ 60 lb



48
Page

FC14X24 - Flip-Door Pullout Cabinet

The narrow version of the FDCAB14

23.5" W x 14.5" H x 20" D ~ 30 lb



49
Page

FC20X24 - Flip-Door Pullout Cabinet

The narrow version of the FDCAB20

23.5" W x 20.5" H x 20" D ~ 36 lb



36
Page

F2D27X24 - Narrow Combo Flip-Door Pullout Cabinet with two 6" drawers

37.75" W x 35" H x 20" D ~ 70 lb

23.5" W x 26.75" H x 20" D ~ 65 lb

See Page Listed Next To Item for Details

Pullout Cabinet Accessories - Shelves and Drawers - Available in Standard or Narrow Widths



Pullout Cabinets have a series of slots that accept our optional shelves and mini drawers. Sliders or brackets snap into slots in the cabinet, shelves and drawers snap onto the sliders or brackets.

For Standard Width Cabinets (Page 47)
ASHELF - Adjustable Stationary / Base Shelf
 35.25" W x 1" H x 18" D ~ 10 lb
PUSHE - Pullout Shelf
 35.25" W x 2" H x 18" D ~ 13 lb
MINIDRW - Pullout Mini Drawer
 35.25" W x 2" H x 18" D ~ 10 lb

For Narrow Width Cabinets (Page 50)
ASHELF24 - Narrow Stationary / Base Shelf
 21" W x 1" H x 18" D ~ 7 lb
PUSHE24 - Narrow Pullout Shelf
 21" W x 2" H x 18" D ~ 9 lb
MINDW24 - Narrow Mini Drawer
 20.75" W x 2" H x 18" D ~ 7 lb

Mica Tops and Bridge Shelves - Available in a variety of sizes and come in 11 finishes (Page 51)



BRG38 - Bridge / Shelf (Page 52)
 Use as shelf or to float cabinets or mica tops.
 37.75" W x 1" H x 20" D ~ 13 lb

BRG38 sits between two cabinets or stacks of equal height. No tools or assembly required.



TOP38: For One Standard Cabinet
 (37-3/4" W x 2" H x 24" D)
TOP75: For Two Cabinets side-by-side
 (75-1/2" W x 2" H x 24" D)
TOP24: For One Narrow Cabinet
 (23-1/2" W x 2" H x 24" D)
TOP47: For Two Narrow Cabinets side-by-side
 (47" W x 2" H x 21" D)
TOP61: For a Narrow Cabinet next to a Standard Cabinet
 (61-1/4" W x 2" H x 24" D)

Metal Tops - Come in a variety of shapes and sizes - Available in any of 18 colors to match cabinets (Page 53)



MTOP40: For one Standard Cabinet
 (39-3/4"W x 1"H x 21"D)
MTOP77: For two Standard Cabinets side-by-side
 (77-1/2"W x 1"H x 21"D)
MTOP26: For one Narrow Cabinet
 (25-1/2"W x 1"H x 21"D)
MTOP49: For two Narrow Cabinets side-by-side
 (49"W x 1"H x 21"D)
MTOP63: For a Standard Cabinet next to a Narrow Cabinet
 (63-1/4"W x 1" H x 21"D)



Page 54



TTOP40 - Island / Coffee Table Top
 39-3/4" W by 1" H by 42" D

Page 55



MDTOP: Metal Desk Top / Bar Top
 77-1/2"W x 1"H x 30" D
DESKMP - Desk Modesty Panel
 28"W x 26-3/4"H x 1"D

This top features a 9" rear overhang. Set it on top of any two Narrow Cabinets for a desk or two Standard Cabinets for a bar style setup.

See Page Listed Next To Item for Details

Screw-In Wheels And Legs - Replace the levelers found at the bottom of most Can-Am cabinets



60
Page

WHEELS - Set of 4 screw-in wheels
Adds 2" in height. ~ 0.5 lb
For use with a single cabinet only



Page 59

LEGSW - Set of 4 screw-in wood legs
Available at 2", 3", 4", 5" and 6"



LEGSM - Set of 4 screw-in metal legs
Available at 2", 3", 4", 5" and 6"

Heavy Duty Caddies - For a stack of cabinets or side-by-side cabinets (Page 56)



CADDY24 - Narrow Single Length Caddy
For narrow cabinets
23.5" W x 6" H x 20" D ~ 24 lb



CADDY38 - Single Length Caddy
For standard width cabinets
37.75" W x 6" H x 20" D ~ 34 lb



CADEL38 - Elevated Caddy
For standard width cabinets
37.75" W x 20.5" H x 20" D ~ 48 lb



CADDY47 - Double Length Caddy
For narrow cabinets side-by-side
47" W x 6" H x 20" D ~ 40 lb



CADDY61 - Double Length Caddy
For standard width cabinets next to narrow cabinets
61.25" W x 6" H x 20" D ~ 50 lb



CADDY75 - Double Length Caddy
For standard width cabinets side-by-side
75.5" W x 6" H x 20" D ~ 52 lb



If you would like the convenience of a heavy duty caddy, but would rather not see it, you need a Caddy Wrap. Color matched to your cabinets, the Caddy Wrap converts your Caddy into a more permanent looking base

Page 57



CADWRAP - Single Caddy Wrap
For use with CADDY38
38" W x 7" H x 20.5" D ~ 8 lb
CADWRAP2 - Double Caddy Wrap
For use with CADDY75
76" W x 7" H x 20.5" D ~ 14 lb

Media Accessories / In-Drawer Accessories

Divider Kits - Dividers & Backstops keep CDs & DVDs under control in cabinet drawers. The Dividers create 6 rows for CDs or 4 rows for DVDs, Blu-ray or VHS movies. The backstops glide along the divider rods and self lock. They keep everything under control when the rows are not full. This is our most popular accessory. Most people who don't order them with their cabinets order them after they receive the cabinets.

Page 61



INDX - Index Plates
Page 61



LABEL35 - 3.5" wide Label Holder
LABEL55 - 5.5" wide Label Holder
Page 62

You need 6 Dividers and Backstops per drawer for CDs or 4 Dividers and Backstops per drawer for DVDs, Blu-ray and VHS movies. You can mix CDs and DVDs in one drawer.

DIVBS12 - Set of 12 dividers & backstops ~ 2 lb
DIVBS18 - Set of 18 dividers & backstops ~ 3 lb
DIVBS24 - Set of 24 dividers & backstops ~ 4 lb



CD / DVD / Blu-ray Storage

Can-Am provides high density, high capacity CD, DVD and Blu-ray storage at its best. Each 6" drawer holds 270 CDs or 120 DVDs/Blu-ray. And that's in standard packaging. 540 CDs per drawer in slimline cases. Over a thousand discs in sleeves or pouches.

We have two, three and four drawer cabinets to choose from. And they stack so you can achieve any combination up to nine drawers high. That adds up to 2400 CDs in three feet - 7500 in sleeves. And full extension sliders ensure access to every one of them. Dust-free and secure.

Two, three and four drawer cabinets can be combined to form just the right configuration. A fully loaded cabinet can weigh three hundred pounds and a stack could weigh over a thousand pounds. Our product is steel, our strength is a commitment to safety, quality and service.

Can-Am media cabinets are the choice of studios, professionals, corporate archives and serious collectors all around the world. Safety interlocking drawers allow only one drawer to open at a time, to prevent tipping. C-clamps connect stacked cabinets to each other. A unique divider and backstop system keeps everything under control, and key locks provide security. Adjustable levelers lift and stabilize the cabinet or rest in dimples topside for positive positioning when stacking.

Dust-free space efficient storage at its best. Team media cabinets up with stereo cabinets for an amazing AV center. Choose from 18 colors and relax - you can't outgrow Can-Am cabinets. They grow with you. And rest assured we'll be there when you need more. We know how to build great cabinets and we know how to get them to you. We've been doing that since 1979.





Stereo / AV / Electronic Component Cabinets

Design your stereo or AV center around your equipment, your CD collection, and your lifestyle. Hi-Fi never had it so good. Combine CD storage cabinets with stereo modules for an incredible and expandable media center. Add drawers as your CD and DVD library grows and pullout cabinets for new AV equipment, media center computers or home music servers.

Can-Am cabinets will adapt to your changing needs. You can add modules or reconfigure as required. You can even have your stereo center on wheels. With Can-Am stereo and AV cabinets you can relax in the knowledge that you made the right furniture decision - just sit back and turn up the volume!

Electronic cabinets good enough to be Can-Am cabinets. Our pullout cabinets are built with the same exacting standards found in our CD / DVD storage cabinets. They share the same dimensions to stack safely, conveniently, and confidently, so you can keep your CDs and DVDs right where you want them.

Flip-door pullout cabinets provide a dust-free home for your valuable electronics and are available with key locks for added security. That'll keep those peanut butter fingers off your sensitive equipment and keep them out of sight when not in use.



Can-Am pullout cabinets feature a series of slots that accept our pullout or stationary shelves. Sliders snap into the slots and the shelves snap onto the sliders. Our pullout shelves are as strong as our drawers. They extend fully so you can access the rear of your equipment for easy wiring or for turn tables. A friction catch ensures your shelves don't roll out accidentally. Pullout cabinets feature wiring holes outfitted with plastic bushings for cables and power cords. Heat generated by your electronics is naturally absorbed by the metal cabinets and radiated away. They don't call Can-Am cabinets cool for nothing! Pullout cabinets have adjustable levelers to lift and stabilize the cabinet or they rest in dimples topside for positioning when stacking. A base shelf of some sort to create a false floor above those levelers is recommended.



Two widths are available - 23.5" or 37.75". Wider cabinets will accommodate two stacks of electronic components, side by side. Narrow cabinets will accommodate one. Narrow cabinets will line up with our standard width cabinets, as they are the same height and depth so you can reach virtually any width to accommodate any space. Tops are also available in a variety of lengths. Put your stereo center on a pedestal with legs or give it mobility with wheels.

You can reconfigure or expand your modular stereo or AV center at any time. Can-Am cabinets are built to last and designed to grow with you, your CD and DVD collection, and even your stereo and A/V components.

Incorporate a computer in your TV stand or media center. We can do that. Design without limitations!

Design your AV center, module by module. Choose from 18 colors and let your imagination run wild.





TV Stand or Home Theater Furniture

Design a TV stand or home theater setup around your TV and your electronics. And let's not forget about your DVD and Blu-ray collection. Design your home theater setup module by module and relax - if you change your TV you can always expand or reconfigure.

Invest in your very last home theater furniture. Design your home theater or TV stand with modular metal cabinets and tops. When you change your TV, or your home, you won't have to change your Can-Am cabinets.

Can-Am cabinets are made of steel, and steel is recyclable so they will never end up in a landfill.

Before

After

Wasn't it yesterday when that floor-standing rear projection TV was the one to have? Our customer here had the foresight to furnish his TV with Can-Am cabinets, and the only thing to go was his TV. A reconfiguration and voila! If you have conventional cabinetry, don't get fooled again. Invest in modular AV furniture.



Don't lock yourself into a cookie cutter entertainment center you know you'll outgrow. Can-Am cabinets provide limitless design flexibility. With the advent of media center PCs that do everything from playing and recording TV shows to controlling every aspect of your home theater, it's nice to know you can always add a computer to your entertainment center. Can-Am computer cabinets integrate seamlessly into your setup. And no TV stand is complete without a place for game consoles and all your accessories. Game on.

Nobody knows your lifestyle, your space, your style, your needs, and your electronics, better than you do. So who better to design your home theater cabinetry or TV stand? And what is home theater without access to your huge collection of DVD and Blu-ray movies? Choose one of our all-in-one cabinets like our FDCOM2D27 or COM2D20 or go configure your own AV center.

Can-Am Cabinets are made of metal with metal or laminated wood tops. They are available in eighteen decorator colors. While you can Go Configure your own home theater setup, Can-Am can help. Feel free to speak to one of our knowledgeable design representatives.





Home Office / Computer Furniture

Design your own computer station or your home office setup module by module. Choose from a wide variety of pullout, hanging file and storage modules to create just the right configuration for your space. Combine high tech with high efficiency and durability.

You can have everything you need at your finger tips. You can even have it on wheels. Can-Am modular metal cabinets and metal or laminated wood tops produce state of the art computer and home office furniture. Pick your colors and design a configuration to match your equipment, your space, and your lifestyle. And you can add modules or reconfigure as required.

What about a computer in your AV center? With Media Center PCs that do everything from play and record TV shows, to controlling every aspect of your home theater, you're going to want a computer in your AV center too, and nobody does that better than Can-Am.

Can-Am pullout cabinets with pullout shelves create king-sized keyboard and laptop stations that can be positioned right where you want them. Add a full size pullout writing desk above your keyboard station for an incredibly efficient workstation. And flip-door pullout cabinets let you keep your equipment dust-free and out of sight when not in use. Incorporate drawer modules in your computer station to store CDs, files or software manuals. You can reconfigure or expand your computer station or home office setup at any time.

Can-Am modular cabinets perform exceptionally well in a home office. Space efficiency and durability. Whatever you want, wherever you want it. You can even design a counter height stand-up computer workstation on wheels. Your only limit is your imagination. Create an ergonomic setup for comfort and productivity to maximize your potential. Can-Am cabinets are built to last and designed to grow with you.



Don't forget the kids. Design a computer dresser that's as cool as it is functional. In a word, "Awesome".

This is the last computer furniture you will ever want or need. Once you get on a Can-Am surfboard, you'll be hard pressed to accept anything less. Design your own setup, but feel free to talk to one of our designers for assistance. The Can-Am representatives you talk to or communicate with by email will be on a Can-Am computer station themselves, so they can definitely relate.



A Solid Steel Desk, Just Like The Good Old Days...



But Better!

You choose which module will act as your left desk pedestal and your right desk pedestal. Choose any two narrow cabinets of the same height and you're on your way to your dream desk. Choose 20.5" high modules on tall legs or 27" high modules on short or no legs. Either way they look great and they work great. Just the right height, just the right amount of CD and file storage, just the right depth and just the right power station for your laptop or printer. It's all right where you want it.



Eco-friendly, too.

Steel is completely recyclable and will never end up in a landfill. The rich powder coat finish is VOC-free and hypoallergenic. Can-Am cabinets should last a lifetime or two, so relax - choose your color to match your lifestyle and enjoy the best desk and credenza money can buy. The only thing the next generation will have to worry about is who gets to keep it.

Mica Or Metal Top - Writing Or Computer Desk?

Mica tops are 24" deep and metal desk tops are 30" deep with a 9" rear overhang for your guests. Legs are available in 5 heights from 2 to 6". Choose the height that makes it right for you. Keyboard station or writing desk? If it is predominantly a computer or laptop desk you're after, don't settle for 29" writing desk height that dates back to the days when computers didn't even exist. 27" might work better for you. 20.5" high narrow cabinets on 6" legs with a post formed mica top, tops out at 27.5" - perfect laptop station for most people. The rounded edge on the mica top adds to the total comfort package. 27" high cabinets and a metal desktop also comes in at 27.5" high. Add 2" legs and you're at 29". Go Configure.



CAN-AM Takes File Cabinets To New Heights And Widths

2 Widths, 3 Heights, 18 Colors ... Unlimited Possibilities

With Can-Am lateral file cabinets, you get what you want, anywhere you want it. You can even have them on wheels. Stack them vertically, dresser style or back to back as a work island complete with top. There are many cabinets sized like our filing modules that can also be used to design your filing solution. So get out your wish list and design your ideal filing solution and relax - you can always expand or reconfigure.



Eco Friendly, North American Made & Available in 18 Colors To Match Any Decor

Can-Am cabinets are 100% steel, completely recyclable and will never end up in a landfill. The rich powder coat finish is VOC free and hypoallergenic. Can-Am cabinets will last a lifetime, so choose your color to match your lifestyle and enjoy the best file cabinet money can buy. A North American made cabinet does not have to travel from the other side of the world either.



A Variety Of Modules For Unlimited Filing Opportunities

Combine a lateral file cabinet for hanging files with a file cabinet for CDs or DVDs and you've got the ultimate filing solution. A filing cabinet for both your active files and all your digitized archive files. Think of the space savings alone. Can-Am has filing cabinets in a huge array of sizes and configurations. And they stack for incredible flexibility.

One disc can hold thousands of scanned, electronic or digital files. One Can-Am 6" drawer can hold 540 discs in slimline cases or 1,000 discs in sleeves. Digitized files will soon be the norm for archiving files and accessing them. And nobody can get you through the transition better than Can-Am. Our file cabinets can be configured with as much file capacity or disc capacity as you like. Last year's files get digitized and filed efficiently in the media drawers along with your active files. No more rifling in the basement or warehouse to access five year old files. It's all there - in one place.

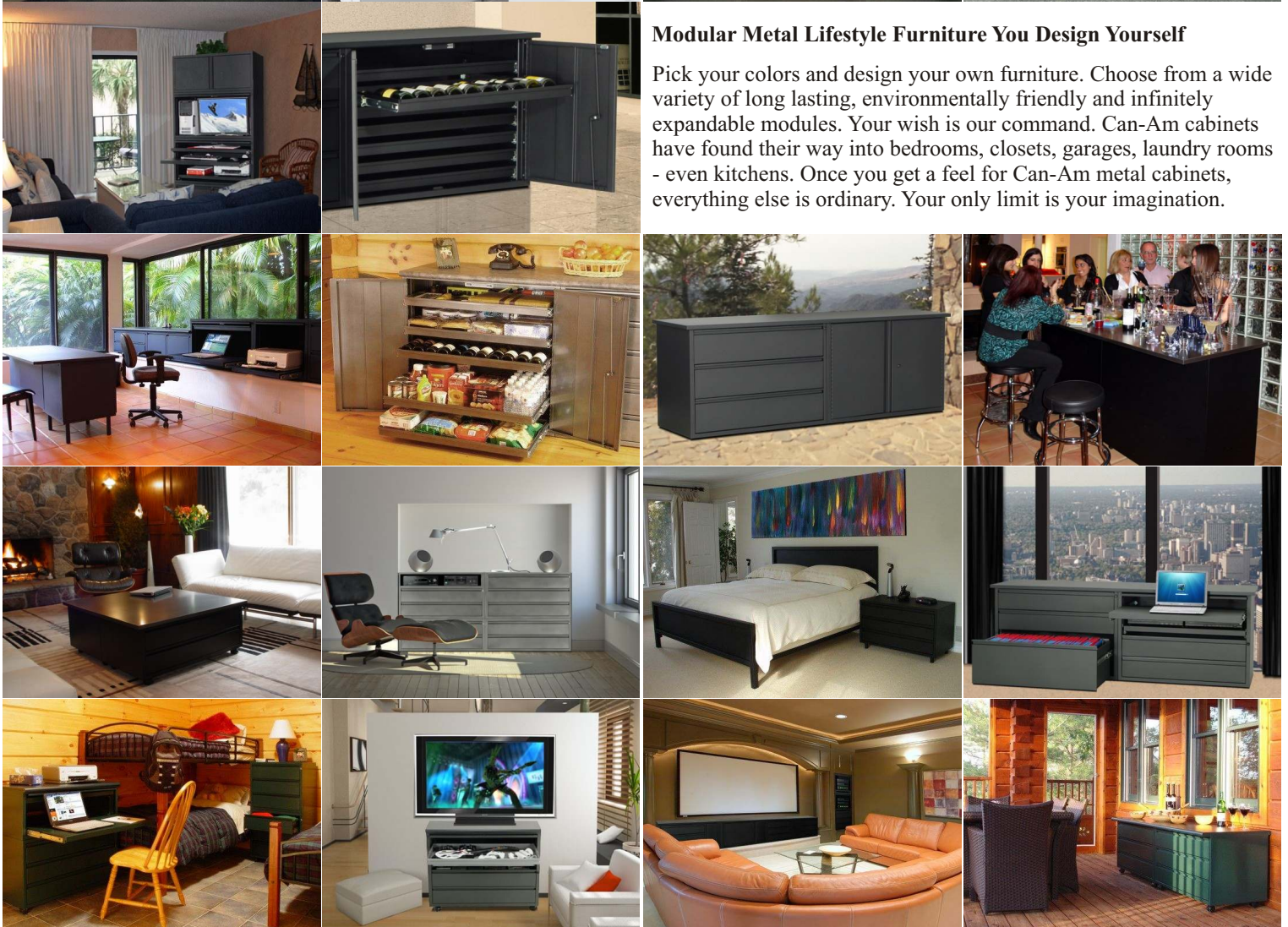


Lifestyle Furniture - Can-Am is not just modular AV furniture, it's anything-you-want furniture. Fit your needs. Fit your lifestyle.



Modular Metal Lifestyle Furniture You Design Yourself

Pick your colors and design your own furniture. Choose from a wide variety of long lasting, environmentally friendly and infinitely expandable modules. Your wish is our command. Can-Am cabinets have found their way into bedrooms, closets, garages, laundry rooms - even kitchens. Once you get a feel for Can-Am metal cabinets, everything else is ordinary. Your only limit is your imagination.



MC2D14 - 2 Drawer Cabinet with 6" Drawers

A '14 Series' Cabinet



Two Drawers, hundreds of possibilities

MC2D14 holds 540 CDs or 240 DVDs or Blu-ray in standard packaging - 1,100 disc in slimline cases and over 2,000 in sleeves. It is very useful in configurations to meet certain height objectives. MC2D14 is sized like all 14.5" high cabinets. And like all our drawer cabinets, it comes with a lock.

They're not just for CDs and DVDs either - Imagine all the things you could put into six inch deep drawers. With 100 lb of capacity per drawer and full-extension ball-bearing sliders, MC2D14 can hold it all and provide access to every inch. A safety interlocking feature allows only one drawer to open at a time. For your convenience, all cabinet locks are keyed alike.



SPECIFICATIONS

Weight: 70 lb

Cabinet Dimension: 37.75" W x 14.5" H x 20" D

Inside Drawer: 34" W x 6" H x 18" D

FEATURES

- Safety interlocking drawers prevent tipping
- Key lock for added safety and security
- Heavy duty full-extension ball bearing sliders
- Provides dust-free super space efficient storage

Weight Capacity: 100 lb per drawer

Construction: 18 & 22 ga cold rolled steel

Finish: Baked on powder coat available in 18 colors

Lock: Standard (Cabinets can be ordered without locks)

- Adjustable feet levelers provide stability and lift the cabinet off the floor. The levelers rest in dimples topside for positive positioning when stacking
- Includes hardware for connecting cabinets when stacking
- Like all Can-Am cabinets, there is no assembly required.

CAPACITY: 540 CDs or 240 DVDs or Blu-ray in standard packaging. 1080 CDs in slimline cases. Over 2000 in sleeves.

MATCHING CABINETS

These cabinets are sized like MC2D14 - useful when designing configurations that need to meet at a certain height.



FDCAB14



HFCAB14



COM3D14

OPTIONS: WHEELS / CADDY / LEGS / TOPS / LABEL HOLDERS / INDEX PLATES / DIVIDERS & BACKSTOPS

MC3D20 - 3 Drawer Cabinet with 6" Drawers

A '20 Series' Cabinet



Stack our MC3D20 with confidence. Three high delivers nine drawers of serious storage. That's over 2,400 CDs in just three feet. 5,000 discs in slimline cases - 10,000 in sleeves.

They're not just for CDs and DVDs either. With a capacity of 100 pounds per drawer it will carry anything and everything. The full extension sliders mean you have access to every inch of space - and to avoid tipping, the safety interlocking feature ensures only one drawer can be open at a time. The finishing touch - a key lock for added safety and security.

MC3D20 is sized like our flip door pullout cabinet FDCAB20, will stack with any standard width cabinet and will line up with any '20 Series' cabinet - narrow or standard. It is a valuable member of our modular family. This cabinet can be ordered without locks and like all Can-Am cabinets, no assembly is required. Go Configure.



SPECIFICATIONS

Weight: 95 lb
Cabinet Dimension: 37.75" W x 20.5" H x 20" D
Inside Drawer: 34" W x 6" H x 18" D
Weight Capacity: 100 lb per drawer
Construction: 18 & 22 ga cold rolled steel
Finish: Baked on powder coat in any of 18 colors
Lock: Standard (Cabinets can be ordered without locks)

CAPACITY

810 CDs or 360 DVDs or Blu-ray in standard packaging,
1620 discs in slimline cases and 3200 discs in sleeves.

MATCHING CABINETS

The MC3D20 shares the dimension of the cabinets shown to the right. This is useful when lining up cabinets to create configurations that need to meet at a common height.



FD / CAB20



COM2D20



MC2D20



CH2D20

High Capacity, Value, and Confidence

A Can-Am three drawer cabinet holds 810 CDs or 360 DVDs or Blu-ray in standard packaging. 1620 discs in slimline cases and over 3,000 in sleeves. This cabinet has lots of capacity, and is the ideal base for future growth.



FEATURES

- Safety interlocking drawers prevent tipping
- Key lock for added safety and security
- Heavy duty full-extension ball bearing sliders - total access
- Includes hardware for connecting cabinets when stacking
- Adjustable feet levelers provide stability and lift the cabinet off the floor. The levelers rest in dimples when stacking
- Provides dust-free, space efficient and secure storage
- Steel is recyclable so it will never end up in a landfill
- Like all Can-Am cabinets, there is no assembly required.

OPTIONS: WHEELS / CADDY / LEGS / TOPS / LABEL HOLDERS / INDEX PLATES / DIVIDERS & BACKSTOPS

MC3D27 - 3 Drawer Cabinet (8" Drawers)

A '27 Series' Cabinet

Tall Drawers For Oversized Media!

MC3D27 features 8" high drawers, for media and other items that may be too tall for our 6" drawers. Ideal for oversized sleeved CD packaging, medical optical disc, tabbed vinyl pouches, taller indexing systems and other items that are between 6 and 8 inches in height. If that's not tall enough, consider our cabinets featuring 9" or 12" tall drawers.

To control sleeves better, it has two stages of divider rod slots - an upper and a lower. Order **DIVBS12** Dividers and Backstops and we'll send you two sets of divider rods. The drawers can also be divided into 4, 5 or 6 rows to match the width of your media with maximum space utilization.



MC3D27 will hold 810 CDs in jewel cases or 450 DVDs or Blu-ray stored vertically, in standard movie cases. Many more in sleeves. With a capacity of 100 pounds per drawer, this cabinet can handle anything and everything. Full extension sliders provide total access and safety interlocking drawers prevent tipping. MC3D27 is part of the '27 Series' of cabinets. Stack it with any other standard width cabinet or line it up with any cabinet in the '27" Series - narrow or standard width - for a configuration that meets your needs. This cabinet has the same dimensions as our MC4D27 and the cabinets below.

SPECIFICATIONS

Cabinet Dimension:
37.75" W x 26.75" H x 20" D
Inside Drawer Dimension:
34" W x 8" H x 18" D
Weight: 105 lb
Weight Capacity:
100 lb per drawer
Construction:
18 & 22 ga cold rolled steel
Finish: Baked on powder coat
available in 18 colors
Lock: Key lock is standard
(It can be ordered without locks)



This configuration consists of a 3-drawer cabinet (MC3D27) next to a locking 2-door pullout cabinet (CABDR27), with a double length metal top (MTOP77).

FEATURES

- Safety interlocking drawers prevent tipping
- Key lock for added safety and security
- Heavy duty full-extension ball bearing sliders
- Adjustable feet levelers provide stability and lift the cabinet off the floor. The levelers rest in dimples when stacking
- Available in 18 colors to match any decor.
- Features two stages of divider slots - upper and lower
- Includes hardware for connecting cabinets when stacking
- Provides dust-free space efficient storage
- Ideal height and setup for a media center or dresser
- Steel is recyclable, so this cabinet will never end up in a landfill
- Like all Can-Am cabinets, there is no assembly required.

CAPACITY: 810 CDs or 450 DVDs or Blu-ray in standard packaging. 1000+ sleeves per drawer, or 3000+ per cabinet.

MATCHING CABINETS

The MC3D27 shares the dimensions of these cabinets. Useful for setups that need to meet at a common height.



MC4D27

COM3D27

HFCABD27

CABDRD27

FCOM1D27

FCOM2D27

OPTIONS: WHEELS / CADDY / LEGS / MICA TOP / METAL TOP / MEDIA DIVIDERS & BACKSTOPS / LABEL HOLDERS

MC4D27 - 4 Drawer Cabinet with 6" Drawers

A '27 Series' Cabinet



The Height of Perfection - Excellence and Value

Our four drawer cabinet with 6" drawers holds 1080 CDs, 480 DVDs or Blu-ray, or 240 videos - and that's in standard packaging. 2160 discs in slimline cases or more than 4000 discs in sleeves.

This cabinet may be the perfect height for your setup, but don't be afraid to stack it with our other modules. Optional legs, wheels, and tops finish it off nicely, and with a capacity of 100 pounds per drawer they will carry anything and everything imaginable.

The Height of Economy and Practicality

Four or eight drawers are very popular heights and MC4D27 is more economical and practical than combinations of two and three drawer cabinets. Go Configure!

Full extension sliders for access to every inch of space, locks for security and safety interlocking drawers make this cabinet state-of-the-art. It will line up with all 27 series cabinets and stack with any standard width cabinet. And like all Can-Am cabinets, MC4D27 should last a lifetime, but since steel is recyclable it will never end up in a landfill. Even our powder coat finish is VOC free and eco-friendly.

SPECIFICATIONS

Weight: 120 lb
 Cabinet Dimension: 37.75" W x 26.75" H x 20" D
 Inside Drawer: 34" W x 6" H x 18" D
 Weight Capacity: 100 lb per drawer
 Construction: 18 & 22 ga cold rolled steel
 Finish: Baked on powder coat available in 18 colors
 Lock: Key lock standard (Can be ordered without a lock)

FEATURES

- Safety interlocking drawers prevent tipping
- Key lock for added safety and security
- Heavy duty full-extension ball bearing sliders
- Adjustable feet levelers provide stability and lift the cabinet off the floor. The levelers rest in dimples topside when stacking



- Includes hardware for connecting cabinets when stacking
- Provides dust-free space efficient storage
- Ideal height and setup for a media center or dresser
- Steel is recyclable, so this cabinet will never end up in a landfill
- Like all Can-Am cabinets, there is no assembly required.

Available in a narrow version (23.5" wide) as M4D27X24

CAPACITY: 1080 CDs or 480 DVDs/Blu-ray in standard packaging. 2160 CDs in slimline cases. Over 4000 in paper or plastic sleeves.

MATCHING CABINETS

The MC4D27 shares the dimensions of these cabinets. Useful for setups that need to meet at a common height.



MC3D27



COM3D27



HFCABD27



CABDRD27



FCOM1D27



FCOM2D27

OPTIONS: WHEELS / CADDY / LEGS / MICA TOP / METAL TOP / MEDIA DIVIDERS & BACKSTOPS / LABEL HOLDERS



A '20 Series' Cabinet

MC2D20 features 9" high drawers for media and other items that may be too tall for our standard 6" drawer. It is sized like our 3 Drawer Cabinet (MC3D20) pictured on top of the MC2D20 to the left, and will integrate seamlessly into configurations.

Extra Tall for Extra Capacity!

MC2D20 has taller drawers for taller media, oversized CD packaging, medical optical disc, tabbed vinyl sleeves and other items that are between 6 and 9 inches in height. If that's not tall enough, consider cabinets with 12" high drawers. MC2D20 is not just for media either, each 9" deep drawer will hold 100 lb of anything and everything.



With Can-Am - You're Ready For Anything

If your media or sleeve storage solution is too tall for a 6" drawer, the MC2D20 was made just for you. You can even store your DVDs or Blu-ray vertically - although this means you can't read the spines if labeled normally. MC2D20 was designed to accommodate DVD sleeves and pouches that store the disc and accompanying artwork. It includes two stages of divider rod slots to support those taller sleeves or pouches. The lower rods keep them in rows, while the upper rods keep them from falling over sideways. The backstops keep them in check. The drawers can be divided into 2, 4, 5 or 6 rows to match the width of any media to maximum space utilization. When ordering dividers and backstops with this cabinet, a double set of rods will be included.



SPECIFICATIONS

Weight: 85 lb

Cabinet Dimension: 37.75" W x 20.5" H x 20" D

Inside Drawer: 34" W x 9" H x 18" D

Weight Capacity: 100 lb per drawer

Construction: 18 & 22 ga cold rolled steel

Finish: Baked on powder coat available in 18 colors

Lock: Standard (Cabinets can be ordered without locks)

CAPACITY: 540 CDs or 300 DVDs or Blu-ray in standard packaging. 1080 discs in slimline cases and 2000 discs in sleeves.

FEATURES

- Extra-tall 9" drawers for added capacity
- Key lock for added safety and security
- Heavy duty full-extension ball bearing sliders
- Safety interlocking drawers prevent tipping
- Drawer divides into 2, 4, 5 or 6 even rows.

- Adjustable levelers provide stability and lift the cabinet off the floor.
- Levelers rest in dimples topside for positive positioning
- Includes hardware for connecting cabinets when stacking
- Second row of rods supports tall media, sleeves, and pouches

MATCHING CABINETS

MC2D20 shares the dimension of the cabinets shown to the right.



FD / CAB20



MC3D20



COM2D20



CH2D20

OPTIONS: WHEELS / CADDY / LEGS / TOPS / LABEL HOLDERS / INDEX PLATES / DIVIDERS & BACKSTOPS

A '14 Series' Cabinet



A Lateral File Cabinet That Just Fits

HFCAB14 is sized like a two drawer media cabinet and all '14 Series' cabinets to integrate seamlessly into virtually any Can-Am configuration. It can easily be configured into any setup. Imagine a filing cabinet in your AV center. A beautiful powder coat finish and detailed construction sets it apart. Optional legs, wheels, and tops finish it off nicely, and 18 powder coat colors ensure it will match any decor.

It works like a file cabinet - but doesn't look like one!

You might not even notice it's there... until you need those important or sensitive papers that are being kept safe and secure in this locking module. The two drawers lock independently, allowing you to keep one drawer secure, while allowing access to the other one. Keep your important documents secure while having full access to those you need on a day-to-day basis.

HFCAB14 can be configured for legal or letter size files. It's ideal in a computer station or for a home office or corporate workstation configuration. It's not just for files either - these 12" deep drawers are our deepest drawers and will accommodate the largest items. And with a capacity of 100 pounds per drawer, it can handle anything that will fit. Full extension sliders give you access to every inch of drawer space. Locks provide security.

SPECIFICATIONS

Weight: 73 lb
Cabinet Dimension: 37.75" W x 14.5" H x 20" D
Inside Drawer: 15.5" W x 12" H x 18" D
Weight Capacity: 100 lb per drawer
Construction: 18 & 22 ga cold rolled steel
Finish: Baked on powder coat available in 18 colors
Locks: 2 are standard - one for each drawer, keyed alike

FEATURES

- Each drawer locks independently
- Can be configured for legal or letter size hanging files
- Heavy duty full-extension ball bearing sliders
- Includes hardware for connecting cabinets when stacking
- Steel is recyclable so it will never end up in a landfill

MATCHING CABINETS

HFCAB14 Share the dimensions of these cabinets - useful when designing configurations that need to line up.



FDCAB14



MC2D14



COM3D14



This configuration consists of two 2-drawer cabinets, a flip-door cabinet (FDCAB14), a double length mica top (TOP75) and the HFCAB14.

- 12" deep drawers for taller items up to 100 lb
- Adjustable feet levelers provide stability and lift the cabinet off the floor. The levelers rest in dimples when stacking
- Provides dust-free space efficient file storage
- Integrates seamlessly into any Can-Am configuration
- Like all Can-Am Cabinets, no assembly is required.

OPTIONS: WHEELS / CADDY / LEGS / TOPS / LABEL HOLDERS

HFCAB27 - 2 Drawer Lateral File Cabinet

A '27 Series' Cabinet



Superior Quality, Value and Infinitely Expandable

The HFCAB27 can be configured for letter or legal sized hanging files. With a capacity of 100 lb per drawer it will carry anything you like. Full extension sliders provide access to every inch and interlocking drawers prevent tipping. A lock is standard.

Love the Height but Tight On Space?

HFCAB27 also comes in a narrow version, HF27X24 at 23.5" wide. You can combine the two to reach virtually any width. A variety of tops are available to match different combinations. These cabinets will line up with any 27 series cabinets and will stack with any Can-Am cabinet of its own width.

SPECIFICATIONS

Weight: 90 lb
 Cabinet Dimension: 37.75" W x 26.75" H x 20" D
 Inside Drawer: 34" W x 12" H x 18" D
 Weight Capacity: 100 lb per drawer
 Construction: 18 & 22 ga cold rolled steel
 Finish: Baked on powder coat available in 18 colors
 Lock: Standard (Cabinets can be ordered without locks)

FEATURES

- Safety interlocking drawers prevent tipping
- Key lock for added safety and security
- Heavy duty full-extension ball bearing sliders
- Includes hardware for connecting when stacking
- Two 12" deep drawers can be configured for legal or letter sized files or larger and taller items
- Steel is recyclable, so it will never end up in a landfill

CAPACITY: Holds letter or legal sized hanging files, or up to 100 lb of items up to 12" tall.

MATCHING CABINETS

The HFCAB27 shares the dimensions of these cabinets. Useful for setups that need to meet at a common height.



MC3D27

COM3D27

MC4D27

CABDRD27

FCOM1D27

FCOM2D27

OPTIONS: WHEELS / CADDY / LEGS / MICA TOP / METAL TOP / MEDIA DIVIDERS & BACKSTOPS / LABEL HOLDERS

A Lateral Filing Cabinet Good Enough For Your Living Room

The perfect height with a contemporary style that just fits. A beautiful powder coat finish and detailed metal construction sets it apart. It is also part of the Can-Am family of modules so it can be configured into any setup. As a stand-alone filing solution or in configurations, HFCAB27 provides exceptional value. Optional legs, wheels, and tops finish it off nicely, and 18 powder coat colors ensure it will match any decor.



- Powder coat finish is VOC-free and eco-friendly
- Adjustable feet levelers provide stability and lift the cabinet off the floor. The levelers rest in dimples topside for positive positioning when stacking
- Provides dust-free space efficient storage
- Ideal height and setup for a desk, dresser or computer/work station
- Like all Can-Am cabinets, there is no assembly required.

A Media and Lateral File Cabinet in One

CDs or DVDs in one drawer and legal or letter sized hanging files below. All safe and secure with a single lock. Talk about multi-tasking. Imagine what else you could do. Optional legs, wheels, and tops finish it off nicely, and 18 powder coat colors ensure it will match any decor. And best of all, it is part of the Can-Am family of modular cabinets, sized like all '20 Series' cabinets to line up and stack to create just the right setup.



Love the Height but Tight On Space?

CH2D20 also comes in a narrow version, CH20X24 at 23.5" wide. You can even combine the two to reach virtually any width. These cabinets will line up with any 20.5" high cabinet and will stack with any Can-Am cabinet of its own width. With a capacity of 100 lb per drawer it can handle anything that will fit and full extension sliders provides access to every inch. Safety interlocking drawers prevent tipping and a lock keeps it secure.

SPECIFICATIONS

Weight: 85 lb
 Cabinet Dim.: 37.75" W x 20.5" H x 20" D
 Inside Small Drawer: 34" W x 6" H x 18" D
 Inside Large Drawer: 34" W x 12" H x 18" D
 Weight Capacity: 100 lb per drawer
 Construction: 18 & 22 ga cold rolled steel
 Finish: Baked on powder coat available in 18 colors
 Lock: Standard (Cabinets can be ordered without locks)

FEATURES

- Combines 6" and 12" drawers for lots of flexibility
- Safety interlocking drawers prevent tipping
- Key lock for added safety and security
- Heavy duty full-extension ball bearing sliders for total access
- Adjustable feet levelers provide stability and lift the cabinet off the floor. The levelers rest in dimples topside when stacking
- Includes hardware for connecting cabinets when stacking

Superior Quality, Value and Infinitely Expandable

CH2D20 combines one 12" deep hanging-file drawer and one 6" media or general purpose drawer. As with all our modular cabinets, it integrates seamlessly into virtually any configuration. Go ahead. Get what you want, anywhere you want it.



- Steel is recyclable so it will never end up in a landfill
- Provides dust-free space efficient storage
- The hanging file drawer can be configured for legal or letter-sized hanging files or used to store toaster-sized items
- The 6" drawer can be configured with our divider kit (DIVBS12) for storage of CDs or DVDs or Blu-ray
- Like all Can-Am cabinets, there is no assembly required.

CAPACITY: 270 CDs or 120 DVDs/Blu-ray in standard packaging, 540 CDs in slimlines. Plus letter or legal files.

MATCHING CABINETS

CH2D20 shares the dimension of the cabinets here. Useful when designing configurations that line up.



MC3D20



FD / CAB20



COM2D20



MC2D20

OPTIONS: WHEELS / CADDY / LEGS / MICA TOP / METAL TOP / MEDIA DIVIDERS & BACKSTOPS / LABEL HOLDERS

A '14 Series' Cabinet



Half file cabinet, half media cabinet A filing cabinet for the twenty-first century

COM3D14 combines one hanging file drawer and two 6" media or general purpose drawers. This versatile cabinet will provide secure storage for your printed copies as well as your electronic and software backups. Store your CDs, sensitive documents and printouts in the same cabinet.

The two small drawers can be configured with our divider kit to accommodate CDs or DVDs. The hanging file drawer can be configured for legal or letter size files.

COM3D14 is sized like a two drawer cabinet (MC2D14) and all '14 Series' cabinets to integrate seamlessly into virtually any Can-Am configuration. Full extension sliders provide access to every inch of space and the safety interlocking feature on the 6" drawers ensures only one drawer can be open at a time. Multi sized drawers for multi tasking. Two locks let you lock the small drawers and the hanging file drawer independently, so you can keep one side secure, while allowing access to the other. You can even choose where the hanging file drawer or small drawers go. The standard setup is with the hanging file drawer at the right.

SPECIFICATIONS

Weight: 78 lb
Cabinet Dim.: 37.75" W x 14.5" H x 20" D
Inside Small Drawer: 15.5" W x 6" H x 18" D
Inside Large Drawer: 15.5" W x 12" H x 18" D
Weight Capacity: 100 lb per drawer
Construction: 18 & 22 ga cold rolled steel
Finish: Baked on powder coat in 18 colors
Locks: 2 are standard, all cabinet locks keyed alike



CAPACITY: 270 CDs or 120 DVDs/Blu-ray in standard packaging, 540 discs in slim-line cases, 1000 + in sleeves. Plus files.

FEATURES

- 2 key locks for added safety and flexible security
- Heavy duty full-extension ball bearing sliders
- Space for hard copies and electronic backups
- The two small drawers are safety interlocked and can be configured with our divider kit for CDs or DVDs

- The hanging file drawer can be configured for legal or letter size files. It can also be used to store toaster sized items
- Adjustable feet levelers provide stability and lift the cabinet off the floor. The levelers rest in dimples topside when stacking
- Includes hardware for connecting cabinets when stacking
- Like all Can-Am cabinets, no assembly is required.

MATCHING CABINETS

COM3D14 shares the dimensions of the three cabinets to the right - useful when designing configurations that need to line up.



FDCAB14



MC2D14



HFCAB14

OPTIONS: WHEELS / CADDY / LEGS / TOPS / LABEL HOLDERS / INDEX PLATES / DIVIDERS & BACKSTOPS



COM3D27 Is A Combination Cabinet That Handles Your Paper And Digital Files

With one hanging file drawer for letters or legal files and two media drawers to file your CDs and DVDs, this cabinet meets today's demands. If you are going paperless, the media drawers can handle many filing cabinets worth in digitized form while the file drawer is used for irreplaceable originals. Optional legs, wheels, and tops finish it off nicely, and 18 powder coat colors ensure it will match any decor.

Half Filing Cabinet, Half Media Cabinet - 100% Eco-Friendly

With Can-Am, your filing cabinets don't have to look like filing cabinets - they can look like furniture. COM3D27 provides function and form and with the flexibility of 6" and 12" drawers, it offers a lot of flexibility and storage opportunities. As with all our modular cabinets, it integrates seamlessly into virtually any configuration. This cabinet will line up with all 27 series cabinets and stack with any standard width cabinet. And like all Can-Am cabinets, COM3D27 should last a lifetime, but since steel is recyclable, it will never end up in a landfill. Even our powder coat finish is VOC-free and eco-friendly.



SPECIFICATIONS

- Weight: 95 lb
- Cabinet Dimension: 37.75" W x 26.75" H x 20" D
- Top Two Drawers: 34" W x 6" H x 18" D
- Bottom Drawer: 34" W x 12" H x 18" D
- Weight Capacity: 100 lb per drawer
- Construction: 18 & 22 ga cold rolled steel
- Finish: Baked on powder coat available in 18 colors
- Lock: Standard (Cabinets can be ordered without locks)

FEATURES

- Combines 6" and 12" drawers for lots of flexibility
- Safety interlocking drawers prevent tipping
- Key lock for added safety and security
- Heavy duty full-extension ball bearing sliders, for total access
- Adjustable feet levelers provide stability and lift the cabinet off the floor. The levelers rest in dimples topside when stacking
- Includes hardware for connecting cabinets when stacking

- The hanging file drawer can be configured for legal or letter-sized hanging files or used to store toaster-sized items
- The 6" drawers can be configured with our divider kit (DIVBS12) for storage of CDs or DVDs / Blu-ray and anything else
- Ideal height for a media center, dresser or computer/work station
- Steel is recyclable, so this cabinet will never end up in a landfill
- Like all Can-Am cabinets, there is no assembly required.

Available in a narrow version (23.5" wide) as CH27X24

CAPACITY: 540 CDs or 240 DVDs/Blu-ray in standard packaging. 1080 CDs in slimlines. Plus letter or legal files, or other larger items.

MATCHING CABINETS

The COM3D27 shares the dimensions of these cabinets. Useful for setups that need to meet at a common height.



MC3D27

MC4D27

HFCABD27

CABDRD27

FCOM1D27

FCOM2D27

OPTIONS: WHEELS / CADDY / LEGS / MICA TOP / METAL TOP / MEDIA DIVIDERS & BACKSTOPS / LABEL HOLDERS

A '14 Series' Narrow Cabinet



Narrow Two Drawer Cabinet with 6" Drawers To Go Where No Cabinet Has Gone Before

M2D14X24 features two 6" media or general purpose drawers and holds 270 CDs or 120 DVDs or Blu-ray in standard packaging. Three rows for CDs or two rows for DVDs and Blu-ray. It will also hold 540 discs in slimline cases or over 1000 discs in sleeves. At 14.5" high and only 23.5" wide, it will go places you never dreamed possible. And with a capacity of 100 pounds per drawer, it will carry anything. Full extension sliders provide total access and safety interlocking drawers prevent tipping.

Narrow cabinets are just like our standard cabinets - but narrower! Our 2 feet wide cabinets complement the standard 3 feet wide cabinets, providing the flexibility to reach virtually any width or fill any space. How wide do you need your setup or TV stand? Four feet? Five? Six? Seven? Even eight or nine feet? No Problem! Narrow cabinets line up beside our standard width cabinets, but can only stack on top of other narrow cabinets. Outfit them with LEGS for lift, or WHEELS for mobility.



MATCHING CABINETS

The M2D14X24 is the same height and depth as Can-Am standard width '14 Series' cabinets - MC2D14, HFCAB14, COM3D14, CAB14 and FDCAB14. It shares the exact dimension of the FC14X24 flip door pullout cabinet shown to the right. This is useful when designing configurations that need to line up.



FC14X24

SPECIFICATIONS

Weight: 50 lb
Cabinet Dimension: 23.5" W x 14.5" H x 20" D
Inside Drawer: 20" W x 6" H x 18" D
Weight Capacity: 100 lb per drawer
Construction: 18 & 22 ga cold rolled steel
Finish: Baked on powder coat in 18 colors
Lock: Key lock is standard (can be ordered without)

CABINET FEATURES

- Safety interlocking drawers prevent tipping
- Key lock for added safety and security
- Heavy duty full-extension ball bearing sliders
- Includes hardware for connecting cabinets when stacking
- Adjustable feet levelers provide stability and lift the cabinet off the floor. They rest in dimples topside when stacking
- Like all Can-Am cabinets it comes fully assembled.

OPTIONS: WHEELS / CADDY / LEGS / TOPS/ LABEL HOLDERS / INDEX / DIVIDERS & BACKSTOPS

A '20 Series' Narrow Cabinet



Narrow Three Drawer Cabinet with 6" Drawers

M3D20X24 features three 6" media or general purpose drawers and holds 405 CDs or 180 DVDs or Blu-ray in standard packaging. Three rows for CDs or two rows for DVDs and Blu-ray. It will also hold 810 discs in slimline cases or over 1500 discs in sleeves. At 20.5" high and only 23.5" wide it will go places you never dreamed possible. And with a capacity of 100 pounds per drawer it will carry anything. Full extension sliders provide total access and safety interlocking drawers prevent tipping. Outfit them with LEGS for lift, or WHEELS for mobility.

Narrow cabinets are just like our standard cabinets - but narrower! Our 2 feet wide cabinets complement the standard 3 feet wide cabinets, providing the flexibility to reach virtually any width or fill any space. How wide do you need your setup or TV stand? Four feet? Five? Six? Seven? Even eight or nine feet? No Problem! Narrow cabinets line up beside our standard width cabinets, but can only stack with other narrow cabinets.

M3D20X24 is the same height and depth as standard width '20 Series' cabinets; MC3D20, MC2D20, COM2D20, FDCAB20, CAB20 and CH2D20. It shares the exact dimension of the narrow '20 Series' cabinets - M2D20X24, CH20X24 and FC20X24.

Matching Cabinets

These cabinets are sized like M3D20X24 - useful when designing configurations that need to meet at a certain height.



FC20X24



CH20X24



M2D20X24



SPECIFICATIONS

Weight: 64 lb
 Cabinet Dimension: 23.5" W x 20.5" H x 20" D
 Inside Drawer: 20" W x 6" H x 18" D
 Weight Capacity: 100 lb per drawer
 Construction: 18 & 22 ga cold rolled steel
 Finish: Baked on powder coat in 18 colors
 Lock: Key lock is standard (can be ordered without)

CABINET FEATURES

- Safety interlocking drawers prevent tipping
- Key lock for added safety and security (keyed alike)
- Heavy duty full-extension ball bearing sliders
- Includes hardware for connecting cabinets when stacking
- Adjustable feet levelers provide stability and lift the cabinet off the floor. They rest in dimples topside when stacking
- Like all Can-Am cabinets it comes fully assembled.

OPTIONS: WHEELS / CADDY / LEGS / TOPS/ LABEL HOLDERS / INDEX / DIVIDERS & BACKSTOPS

A '20 Series' Narrow Cabinet

Narrow Two Drawer Cabinet with Extra-Tall 9" Drawers

M2D20X24 has two 9" high drawers, each with a capacity of 100 lb. It holds 270 CDs or 120 DVDs/Blu-ray in standard packaging. Many more in sleeves. M2D20X24 is ideal for taller media, or for sleeves that store DVD/Blu-ray media and the artwork vertically. Outfit them with LEGS for lift, or WHEELS for mobility.



With Can-Am - You're Ready For Anything

If your media, boxed set or sleeve storage solution is too tall for a 6" drawer, and you don't have room for its standard width big brother MC2D20, then M2D20X24 was made just for you.

Two Rows of Divider Rods for Sleeves Stored Vertically.

To control sleeves better, it has two stages of divider rod slots - an upper and a lower. Use **DIVBS12** Dividers and backstops and we'll send you two sets of divider rods. This cabinet can also be divided into 4, 5 or 6 rows to match the width of your media with maximum space utilization.

Extra Tall for Extra Capacity!

MC2D20 has taller drawers for taller media, oversized CD packaging, medical optical disc, tabbed vinyl sleeves and other items that are between 6 and 9 inches in height. If that's not tall enough, consider one of our cabinets with 12" high drawers. You can also store DVDs vertically here, for maximum space efficiency - although this means you can't read the spines if labeled normally.



Narrow cabinets are just like our standard cabinets - but narrower! Our 2 feet wide cabinets complement the standard 3 feet wide cabinets, providing the flexibility to reach virtually any width or fill any space. How wide do you need your setup or TV stand? Four feet? Five? Six? Seven? Even eight or nine feet? No Problem! Narrow cabinets line up beside our standard width cabinets, but can only stack on top of other narrow cabinets.

M2D20X24 is the same height and depth as standard width '20 Series' cabinets; MC3D20, MC2D20, COM2D20, CAB20, FDCAB20, CAB20D and FCAB20D. It shares the exact dimension of all narrow '20 Series' cabinets.



Matching Cabinets

These cabinets are sized like M2D20X24 - that's useful when designing configurations that meet at a certain height.



FC20X24



CH20X24



M3D20X24

SPECIFICATIONS

Weight: 60 lb
Cabinet Dimension: 23.5" W x 20.5" H x 20" D
Inside Drawer: 20" W x 9" H x 18" D
Weight Capacity: 100 lb per drawer
Construction: 18 & 22 ga cold rolled steel
Finish: Baked on powder coat in 18 colors
Lock: Key lock standard

CABINET FEATURES

- Safety interlocking drawers prevent tipping
- Heavy duty full-extension ball bearing sliders - for total access
- Key lock for added safety and security
- Includes hardware for connecting cabinets when stacking
- Adjustable feet levelers provide stability and lift the cabinet off the floor. The levelers rest in dimples topside for stacking
- Two stages of divider rod slots - upper and lower.

OPTIONS: WHEELS / CADDY / LEGS / TOPS/ LABEL HOLDERS / INDEX / DIVIDERS & BACKSTOPS

A '20 Series' Narrow Cabinet

CH20X24 features one standard 6" deep media or general purpose drawer and one 12" deep hanging file drawer, which supports letter or legal hanging files.

Both drawers have a capacity of 100 pounds, so if it fits, it's ok. The 6" drawer will hold 135 CDs in jewel cases or 60 DVDs/Blu-ray in standard movie boxes. It will also hold 270 discs in slimlines or over 500 discs in sleeves.



File Cabinet And Media Cabinet

This is a very popular module. Use it in a stack of narrow cabinets, outfit it with wheels for a mobile side cabinet or configure your desk around it.

CH20XX24 is the narrow version of CH2D20, and just like its big brother, it is great alone, but it's even better when used in a configuration with other modules. This cabinet is part of the '20 Series' of cabinets. Stack it with any other narrow Can-Am cabinet or line it up with any cabinet in the '20 Series' for a configuration that meets your needs. Take two and add a desk top and 6" legs for a great computer or laptop desk!

Narrow cabinets are just like our standard cabinets - but narrower! Our 2 feet wide cabinets complement the standard 3 feet wide cabinets, providing the flexibility to reach virtually any width or fill any space. How wide do you need your setup or TV stand? Four feet? Five? Six? Seven? Even eight or nine feet? No Problem! Narrow cabinets line up beside our standard width cabinets, but can only stack on top of other narrow cabinets.



Matching Cabinets

These cabinets are sized like CHD20X24 - useful when designing configurations that meet at a certain height.



FC20X24



M3D20X24



M2D20X24

SPECIFICATIONS

Weight: 60 lb

Cabinet Dimension: 23.5" W x 20.5" H x 20" D

6" Drawer: 20" W x 6" H x 18" D

File Drawer: 20" W x 12" H x 18" D

Weight Capacity: 100 lb per drawer

Construction: 18 & 22 ga cold rolled steel

Finish: Baked on powder coat in any of 18 colors.

CABINET FEATURES

- Safety interlocking drawers prevent tipping
- Key lock for added safety and security
- Heavy duty full-extension ball bearing sliders - for total access
- Includes hardware for connecting cabinets when stacking
- Adjustable feet levelers provide stability and lift the cabinet off the floor. The levelers rest in dimples for positioning when stacking
- File cabinet and media cabinet - all in less than two feet.

OPTIONS: WHEELS / CADDY / LEGS / TOPS/ LABEL HOLDERS / INDEX / DIVIDERS & BACKSTOPS



A '27 Series' Narrow Cabinet

This four drawer cabinet is perfect when space is limited. At less than 27 inches in height and 24 inches in width it can go places our standard width cabinets can't. But don't let its size fool you. It holds 540 CDs in jewel boxes or 240 DVDs or Blu-ray in standard movie packaging - 1,080 discs in slimline cases and over 2,000 in sleeves. Three rows for CDs - two rows for DVDs.

Stack two and you've got serious high density storage capacity in less than two feet. The narrow width allows M4D27X24 to fit in small places but it can also be lined up with any '27 Series' cabinet to reach virtually any width or fill any space. With a capacity of 100 pounds per drawer, it will carry anything.



Choose any two desk pedestals from the Narrow '27 Series' lineup. Add legs, a modesty panel and a desktop and voila, a metal desk, just like the good old days - but better.

Stack It With Confidence

M4D27X24 is the narrow version of MC4D27, and just like it's big brother, M4D27X24 is great alone, but can also be used in configurations with other modules.

SPECIFICATIONS

- Weight: 78 lb
- Cabinet Dimension: 23.5" W x 26.75" H x 20" D
- Inside Drawer: 20" W x 6" H x 18" D
- Weight Capacity: 100 lb per drawer
- Construction: 18 & 22 ga cold rolled steel
- Finish: Baked on powder coat available in 18 colors
- Lock: Standard (Cabinets can be ordered without locks)

FEATURES

- Safety interlocking drawers prevent tipping
- Key lock for added safety and security
- Heavy duty full-extension ball bearing sliders for total access
- Includes hardware for connecting cabinets when stacking

Safety and Practicality

The full extension sliders mean you have access to every inch of space - and to avoid tipping, the safety interlocking feature ensures only one drawer can be open at a time. And don't forget that a locked cabinet is a safer cabinet. All our drawer cabinets include a key lock for added security and peace of mind. Cabinets are also keyed alike for your convenience. While a lock is standard on all drawer cabinets, they can be ordered without a lock if desired - just ask!

- Adjustable feet levelers provide stability and lift the cabinet off the floor. The levelers rest in dimples topside when stacking
- Provides dust-free space efficient storage
- Steel is recyclable, so this cabinet will never end up in a landfill
- Like all Can-Am cabinets, there is no assembly required.

CAPACITY: 540 CDs or 240 DVDs/Blu-ray in standard packaging. 1080 disc in slimline cases. Over 2000 in paper or plastic sleeves.

MATCHING COMPONENTS

The M4D27X24 shares the dimensions of these cabinets. That's good to know when designing configurations or a desk that needs to be at a common height.



M3D27X24 F2D27X24 F1D27X24 CH27X24 HF27X24

OPTIONS: WHEELS / CADDY / LEGS / MICA TOP / METAL TOP / MEDIA DIVIDERS & BACKSTOPS / LABEL HOLDERS

A '27 Series' Narrow Cabinet

M3D27X24 features three 8" high drawers, with each drawer rated at up to 100 pounds. It holds 405 CDs or 180 DVDs or Blu-ray in standard packaging. Much more in sleeves. It is ideal for taller media packaging and taller sleeves. Three rows for CDs or DVDs/Blu-ray stored vertically.



Extra Tall for Extra Capacity!

M3D27X24 has taller drawers for taller media, oversized CD packaging, medical optical disc, tabbed vinyl sleeves and other items that are between 6 and 8 inches in height.

To control sleeves better, it has two stages of divider rod slots - an upper and a lower. Use **DIVBS12** Dividers and Backstops and we'll send you two sets of divider rods.

The M3D27X24 is part of our '27 Series' lineup and is the same height and depth as standard cabinets in the '27 Series.' This is useful when designing configurations.



SPECIFICATIONS

Weight: 70 lb
Cabinet Dimension: 23.5" W x 26.75" H x 20" D
Inside Drawer: 20" W x 8" H x 18" D
Weight Capacity: 100 lb per drawer
Construction: 18 & 22 ga cold rolled steel
Finish: Baked on powder coat available in 18 colors

CABINET FEATURES

- Safety interlocking drawers prevent tipping
- Key lock for added safety and security
- Heavy duty full-extension ball bearing sliders
- Includes hardware for connecting cabinets when stacking
- Two stages of divider slots, an upper and a lower
- Provides dust-free space efficient storage
- Adjustable feet levelers provide stability and lift the cabinet off the floor.
The levelers rest in dimples topside for positive positioning when stacking.



M3D27X24 is the narrow version of MC3D27, and just like its standard width brother, M3D27X24 is great alone, but it's even better when used in a configuration with other Can-Am modules. This cabinet is part of the '27 Series' of cabinets. Stack it with any other narrow Can-Am cabinet or line it up with any cabinet in the '27 Series' for a configuration that meets your needs. Take two and add a desk top for a great desk! Like all Can-Am cabinets, this cabinet is safe, sturdy and extremely useful.

MATCHING COMPONENTS

The M3D27X24 shares the dimensions of these cabinets. That's good to know when designing configurations or a desk that needs to be at a common height.



M4D27X24

F2D27X24

F1D27X24

CH27X24

HF27X24

OPTIONS: WHEELS / CADDY / LEGS / MICA TOP / METAL TOP / MEDIA DIVIDERS & BACKSTOPS / LABEL HOLDERS

HF27X24 - Narrow 2 Drawer File Cabinet

A '27 Series' Narrow Cabinet



This stack consists of M4D27X24 on top of an HF27X24 on metal legs.

A File Cabinet Good Enough For Your Living Room

This might look like any other lateral filing cabinet, but it isn't. It's better. It's Can-Am: strong, solid, safe, and durable with a hint of style that just fits - and at less than two feet, it fits a lot of places.

It's also part of the Can-Am family of modules so it seamlessly integrates into any configuration. HF27X24 is perfect for storing letter or legal-sized files, or simply for storing larger items that don't fit into cookie-cutter storage furniture.

Stand-Alone or Modular - HF27X24 Just Fits

With this much capacity, in such a small footprint, it's easy to see why it's our most popular narrow filing solution. Optional legs, wheels, and tops finish it off nicely, and 18 powder coat colors mean it will match any decor.

The full extension sliders give you access to every inch of space - and to avoid tipping, the safety interlocking feature ensures only one drawer can be open at a time.



HF27X24 makes a great desk pedestal. Pair it up with another '27 Series' narrow cabinet that suits your needs and you've got a custom desk - made to order.

SPECIFICATIONS

- Weight: 65 lb
- Cabinet Dimension: 23.5" W x 26.75" H x 20" D
- Inside Drawer: 20" W x 12" H x 18" D
- Weight Capacity: 100 lb per drawer
- Construction: 18 & 22 ga cold rolled steel
- Finish: Baked on powder coat available in 18 colors
- Lock: Standard (Cabinets can be ordered without locks)

All our drawer cabinets include a key lock for added security and peace of mind. They are all keyed alike for your convenience. This cabinet can be ordered with or without locks.

Why Not Supersize it?

HF27X24 is also available in a full-width version, at just over three feet wide, as HFCAB27. If you have the room, consider it.

FEATURES

- Safety interlocking drawers prevent tipping
- Key lock for added safety and security
- Heavy duty full-extension ball bearing sliders - for total access
- Includes hardware for connecting cabinets when stacking
- Drawers can be configured for legal or letter sized hanging files
- Adjustable feet levelers provide stability and lift the cabinet off the floor. The levelers rest in dimples topside when stacking
- Provides dust-free space efficient storage
- Ideal height and setup for a desk or computer/work station
- Like all Can-Am cabinets, there is no assembly required.

MATCHING COMPONENTS

The HF27X24 shares the dimensions of these cabinets. That's good to know when designing configurations or a desk that needs to be at a common height.



M3D27X24

F2D27X24

F1D27X24

CH27X24

M4D7X24

OPTIONS: WHEELS / CADDY / LEGS / MICA TOP / METAL TOP / LABEL HOLDERS

CH27X24 - Narrow Combination File Cabinet

A '27 Series' Narrow Cabinet



**A Media and File Cabinet in one.
All In Less Than Two Feet**

CH27X24 Combines one 12-inch tall hanging-file drawer and two 6-inch tall media or general purpose drawers. And at less than two feet wide it fits virtually anywhere you need flexible storage.

Stationary in one drawer, CDs and media in another and legal or letter sized files below. All safe and secure with a single lock. Talk about multi-tasking. As with all our modular cabinets, it integrates seamlessly into virtually any configuration. Go ahead. Get what you want, anywhere you want it.



A Perfect Fit.

Set them under any table top for an instant work station. Pair it up with another '27 Series' narrow cabinet that suits your needs, add a top and you've got a custom desk - made to order. How about a flip-door pullout cabinet for your printer or laptop?

With a capacity of 100 lb per drawer, this cabinet can handle anything that will fit in either 6" or 12" drawers. Full extension sliders provide access to every inch and safety interlocking drawers prevent tipping. A lock keeps it all safe and secure.

CH27X24 is the narrow version of COM3D27. Narrow cabinets are just like our standard cabinets - but narrower! Our 2 feet wide cabinets complement the standard 3 feet wide cabinets, for the flexibility to reach virtually any width or fill any space. Narrow cabinets line up beside our standard width cabinets, but can only stack on top of other narrow cabinets.

SPECIFICATIONS

Weight: 70 lb
Cabinet Dimension: 23.5" W x 26.75" H x 20" D
Inside Bottom Drawer: 20" W x 12" H x 18" D
Inside Top Drawers: 20"W x 6"H x 18" D
Weight Capacity: 100 lb per drawer
Construction: 18 & 22 ga cold rolled steel
Finish: Baked on powder coat available in 18 colors
Lock: Standard (cabinets can be ordered without locks)

FEATURES

- Combines 6" and 12" drawers for lots of flexibility
- Safety interlocking drawers prevent tipping
- Key lock for added safety and security
- Heavy duty full-extension ball bearing sliders for total access
- Adjustable feet levelers provide stability and lift the cabinet off the floor. The levelers rest in dimples when stacking
- Includes hardware for connecting cabinets when stacking
- Provides dust-free space efficient storage
- The file drawer can be configured for legal- or letter-sized hanging files or used to store toaster-sized items
- The 6" drawers can be configured with our divider kit (DIVBS12) for storage of CDs or DVDs/Blu-ray
- Like all Can-Am cabinets, there is no assembly required.

CAPACITY: 270 CDs or 120 DVDs/Blu-ray in standard packaging. 540 Discs in slimlines and over 1,000 in sleeves. Plus files

MATCHING CABINETS

The CH27X24 shares the dimensions of these cabinets. That's good to know when designing configurations or a desk that needs to be at a common height.



M3D27X24

F2D27X24

F1D27X24

M4D27X24

HF27X24

OPTIONS: WHEELS / CADDY / LEGS / MICA TOP / METAL TOP / MEDIA DIVIDERS & BACKSTOPS / LABEL HOLDERS

A '20 Series' Cabinet



COM2D20 combines an AV shelf with two 6" drawers. It features a reinforced top, capable of carrying a TV weighing up to 200 pounds, without the need for an additional top. It's the ultimate all-in-one TV stand and a great stacking module.

COM2D20 is sized like all 20.5" high cabinets, so it can integrate seamlessly into any configuration. Full extension sliders provide access to every inch of drawer space - and the safety interlocking feature allows only one drawer to open at a time. The wiring cutouts at the back of the shelf enables you to keep your electronics connected to your TV and your power source.

COM2D20 combines 2 drawers, which together will hold 240 DVDs or 540 CDs (1080 in slimline cases), with an AV shelf that has room for two electronic components. This module can be extremely useful in configurations where only 2 components are required. It can also be used for electronics that need to be exposed at all times for your remotes, while other components can be tucked away in flip-door pullout cabinets.

SPECIFICATIONS

- Weight: 78 lb
- Cabinet Dimension: 37.75" W x 20.5" H x 20" D
- Inside Drawer: 34" W x 6" H x 18" D
- Shelf Space: 35" W x 5" H x 20" D
- Weight Capacity: 100 lb per drawer / TV capacity: 200 lb
- Construction: 18 & 22 ga cold rolled steel
- Finish: Baked on powder coat in 18 colors Lock: Standard

FEATURES

- Safety interlocking drawers prevent tipping
- Key lock for added safety and security
- Heavy duty full-extension ball bearing sliders
- Includes hardware for connecting when stacking
- Reinforced top supports a TV weighing 200 lb without the need of a top
- Adjustable feet levelers provide stability and lift the cabinet off the floor. Levelers rest in dimples topside for positioning when stacking
- Provides dust-free space efficient CD/DVD storage.

CAPACITY: 540 CDs or 240 DVDs in standard packaging. 1080 discs in slimline cases. 2000+ in paper or plastic sleeves.

MATCHING CABINETS

COM2D20 shares the dimension of the cabinets here. Useful when designing configurations that line up.



MC3D20



FD / CAB20



CH2D20



MC2D20

OPTIONS: WHEELS / CADDY / LEGS / MICA TOP / METAL TOP / MEDIA DIVIDERS & BACKSTOPS / LABEL HOLDERS

A '27 Series' Cabinet



Half Pullout Cabinet - Half Media Storage Cabinet
 FCOM2D27 provides a flip-door pullout area and two 6" deep drawers that will hold hundreds of CDs, DVDs and Blu-ray. Add pullout or stationary shelves or mini-drawers in the upper storage area to create just the right setup.

All-In-One Solution - Saving Money Is Always In Style!

FCOM2D27 holds CDs, DVDs, electronics, consoles, games, Blu-ray, controllers, remotes, AV components - and your TV. All compartments lock for peace of mind. It is shown at right with our four drawer cabinet and matching metal top, but can be configured to work in any configuration you can imagine. It lines up with any cabinet in the 27 series and will stack with any of our standard width cabinets. This combination cabinet does what an MC2D14 and a locking FDCAB14 do, at a considerable saving. It is also available in a 23.5" narrow width version as F2D24X27.

SPECIFICATIONS

- Weight: 90 lb
- Cabinet Dimension: 37.75" W x 26.75" H x 20" D
- Inside Drawers: 34" W x 6" H x 18" D
- Drawer Weight Capacity: 100 lb per drawer
- Construction: 18 & 22 ga cold rolled steel
- Finish: Baked on powder coat available in 18 colors
- Lock: Standard (Cabinets can be ordered without locks)

FEATURES

- Combines 6" drawers and flip door pullout AV cabinet
- Safety interlocking drawers prevent tipping
- Two key locks for added safety and security
- Heavy duty full-extension ball bearing sliders
- Includes hardware for connecting when stacking
- The 6" drawers can be configured with our divider kit (DIVBS12) for storage of CDs or DVDs/Blu-ray



Note: There is no divider between the top and bottom of this cabinet. Therefore, a mini drawer, pullout shelf, or stationary shelf is necessary.

- Room for lots of standard components and oversized items
- Adjustable feet levelers provide stability and lift the cabinet off the floor. The levelers rest in dimples topside when stacking
- Provides dust-free space efficient storage
- Series of tabs accept 3 pullout or stationary shelves or mini-drawers
- Like all Can-Am cabinets, there is no assembly required
- Rear wiring cutouts keeps you connected

CAPACITY: Two 6" drawers hold 540 CDs or 240 DVDs/Blu-ray in standard packaging. 1000 in slimline or 2000 in sleeves.

MATCHING CABINETS

The FCOM2D27 shares the dimensions of these cabinets. Useful for setups that need to be at a common height.



OPTIONS: WHEELS / CADDY / LEGS / TOPS / DIVIDERS & BACKSTOPS / PULLOUT SHELF / STATIONARY SHELF / MINI DRAWER

A '27 Series' Cabinet



Half Lateral File Cabinet - Half Flip Door Pullout Cabinet

The Perfect Office Companion - A lateral hanging file cabinet on the bottom, a flip door pullout cabinet on top. Outfitted with a mini drawer in the top section the FCOM1D27 handles your files and data binders. Choose a pullout shelf and it provides limitless opportunities for laptops, electronics, printers or even a hidden projector ready to dazzle. This cabinet is unique and as versatile as your imagination. Like all Can-Am cabinets, FCOM1D27 fits seamlessly into virtually any modular configuration - but with this flexibility FCOM1D27 has found a real niche in corporate and home office settings. Optional legs, pullout shelves or mini-drawers and tops finish it off nicely. You can even have it on wheels. Imagine the possibilities. Mobile file storage, computer work station, or presentation cart. Go configure. 18 powder coat colors mean it will match any decor.

Note: There is no divider between the top and bottom halves of this cabinet. Therefore, a mini drawer, pullout shelf, or stationary shelf is required. The mini drawer will accommodate data binders up to 11" tall.

SPECIFICATIONS

- Weight: 85 lb
- Cabinet Dimension: 37.75" W x 26.75" H x 20" D
- Inside Bottom Drawer: 34" W x 12" H x 18" D
- Weight Capacity: 100 lb (bottom drawer)
- Construction: 18 & 22 ga cold rolled steel
- Finish: Baked on powder coat available in 18 colors
- Lock: Standard (Cabinets can be ordered without locks)



FEATURES

- Combines a filing drawer and flip door pullout storage
- Locks for added safety and security
- The 12" deep drawer can be configured for legal or letter sized hanging files or for storing larger items
- Heavy duty full-extension ball bearing sliders
- Includes hardware for connecting when stacking
- Rear wiring cutout keeps you connected
- Powder coat finish is VOC free and eco-friendly
- Steel is recyclable, so it will never end up in a landfill
- Room for lots of standard components and oversized items
- Adjustable feet levelers provide stability and lift the cabinet off the floor. The levelers rest in dimples topside when stacking
- Provides dust-free space efficient storage
- Series of slots in the flip door pullout section accept up to three pullout or stationary shelves or mini-drawers
- Like all Can-Am cabinets, there is no assembly required
- FCOM1D27 also comes in a narrow version, 23.5" wide, as F1D27X24. Combine the two to reach virtually any width.

MATCHING CABINETS

The FCOM1D27 shares the dimensions of these cabinets. Useful for setups that need to be at a common height.



OPTIONS: WHEELS / CADDY / LEGS / TOPS / PULLOUT SHELF / STATIONARY SHELF / MINI DRAWER / LABEL HOLDER

A Narrow '27 Series' Cabinet



Good Things Come In Small Packages
FCOM2D27 is one of our most popular combination cabinets. It has a flip door pullout section above and two 6-inch deep media or general purpose drawers. Add pullout or stationary shelves or mini-drawers in the upper area to create your ideal setup!

At only two feet wide, this cabinet will fit places it's larger counterparts could never dream of going.

This cabinet is as valuable as a desk pedestal as it is in a TV stand. Printer here, electronics there. Available in a standard width cabinet as FCOM2D27.



SPECIFICATIONS

- Weight: 65 lb
- Cabinet Dimension: 23.5" W x 26.75" H x 20" D
- Inside Bottom Drawers: 20" W x 6" H x 18" D
- Inside Top Drawers: 20" W x 12" H x 18" D
- Weight Capacity: 100 lb per drawer
- Construction: 18 & 22 ga cold rolled steel
- Finish: Baked on powder coat available in 18 colors
- Lock: Standard (Cabinets can be ordered without locks)

The full extension sliders mean you have access to every inch of space - and to avoid tipping, the safety interlocking feature ensures only one drawer can be open at a time.

Note: Because there is no divider between the top and bottom halves, a pullout shelf, mini drawer, or stationary shelf is a necessary addition to the flip door section. They are sold separately so you can choose.

FEATURES

- Combines 6" drawers and pullout cabinet for lots of flexibility
- Safety interlocking drawers prevent tipping
- Two key locks for added safety and flexible security
- Heavy duty full-extension ball bearing sliders for total access
- Includes hardware for connecting cabinets when stacking
- The 6" drawers can be configured with our divider kit (DIVBS12) for storage of CDs or DVDs/Blu-ray
- Rear wiring hole is fitted with a plastic bushing
- Room for lots of standard components and oversized items
- Adjustable feet levelers provide stability and lift the cabinet off the floor. The levelers rest in dimples topside for positive positioning when stacking
- Provides dust-free space efficient storage
- Series of tabs accept pullout or stationary shelves or mini-drawers, which can be placed in several positions in the flip-door area
- Like all Can-Am cabinets, there is no assembly required.

CAPACITY: The two bottom drawers can each hold 135 CDs or 60 DVDs/Blu-ray in standard packaging. Over 500 sleeves per drawer.

MATCHING CABINETS

The F2D27X24 shares the dimensions of these cabinets. Useful for setups that need to be at a common height.



M4D27X24



CH27X24



M3D27X24



HF27X24



F1D27X24

OPTIONS: WHEELS / LEGS / TOPS / DIVIDERS & BACKSTOPS / PULLOUT SHELF / STATIONARY SHELF / MINI DRAWER



Half Pullout Cabinet - Half File Cabinet

This narrow Can-Am cabinet provides a combination of a flip-door storage area and one 12-inch deep hanging file or general purpose drawer. Perfect as a desk pedestal or office furniture. The bottom drawer allows safe storage of hanging files or larger items while added opportunities lie behind the top door. Add a shelf or pullout and you have found the perfect place to store your printer. Whatever you want - wherever you want it. Its narrow width allows it to fit into small rooms, spaces and corners.

A Small Cabinet Made For Big Things. This cabinet is ideal for storing larger items up to 12" in height while not taking up too much of your space. Want it in a desk? By itself? In any configuration? You're in the right place. Take this narrow cabinet and go configure. Stack it with any other narrow Can-Am cabinet or line it up with any other cabinet in the 27" series for a configuration that meets your needs. Take two and add a Can-Am top for a great desk! Like the others, this cabinet proves itself to be safe, sturdy and convenient. The full extension sliders mean you have access to every inch of space.

SPECIFICATIONS

Weight: 60 lb
Cabinet Dimension: 23.5" W x 26.75" H x 20" D
Inside Bottom Drawer: 20" W x 12" H x 18" D
Inside Top Drawer: 20"W x 12"H x 18" D
Weight Capacity: 100 lb per drawer
Construction: 18 & 22 ga cold rolled steel
Finish: Baked on powder coat available in 18 colors
Lock: Standard (Cabinets can be ordered without locks)

F1D27X24 is the narrow version of FCOM1D27. It is sized like our other narrow cabinets in the 27 series, allowing for many different configurations to be created.

Note: Because there is no divider between the top and bottom halves, a pullout shelf, mini drawer, or stationary shelf is a necessary addition to the flip door pullout section. These items are sold separately so you can choose which is right for you.

FEATURES

- Combines a 12" drawer and pullout storage for lots of flexibility
- Two key locks for added safety and security
- The 12" deep drawer can be configured for legal or letter sized hanging files or for storing larger items
- Heavy duty full-extension ball bearing sliders
- Includes hardware for connecting when stacking
- Rear wiring hole with plastic bushing keeps you connected
- Room for lots of standard components and oversized items
- Adjustable feet levelers provide stability and lift the cabinet off the floor. The levelers rest in dimples topside for positive positioning when stacking
- Provides dust-free space efficient storage
- Series of tabs accept pullout or stationary shelves or mini-drawers, which can be placed in several positions in the flip-door area
- Like all Can-Am cabinets, there is no assembly required.

CAPACITY: Bottom drawer holds taller items up to 12" in height and weighing up to 100 lb.

MATCHING CABINETS

The F1D27X24 shares the dimensions of these cabinets. Useful for setups that need to be at a common height.



M4D27X24

CH27X24

M3D27X24

HF27X24

F2D27X24

OPTIONS: WHEELS / CADDY / LEGS / TOPS / LABEL HOLDERS / PULLOUT SHELF / STATIONARY SHELF / MINI DRAWER

CABDR16 - 2 Door Storage Cabinet

A '16 Series' Cabinet



Above all, there's always room for an LP cabinet

For all those vinyl albums and photo albums and odds and sods that need a dust-free home, there's CABDR16. This two-door cabinet has lots of room for LPs, binders, manuals, albums, books, magazines, office supplies, laser discs - even printers! Who would have thought that a cabinet originally designed for vinyl LPs could be so useful.

There are lots of record collectors out there that cherish their vinyl and continue to add to their collection. So get your collection out of the attic, because this cabinet can handle about 150 LPs. It also makes a great charging station for your cell phones and other rechargeables.

Drawers max out at eye level. That's when doors take over.

Drawers max out at eye level, because you simply can't see down into the drawers. This cabinet rises to the occasion. No problem at eye level or even higher. CABDR16 is very versatile, and the ideal module to top off a stack of 3 or 4 cabinets. It is sixteen inches high and will store anything you can imagine and then some. A small wiring hole lets you stay connected. Also available with a key lock for added safety and security.



SPECIFICATIONS

Weight: 36 lb

Cabinet Dimension: 37.75" W x 16.5" H x 20" D

Inside Dimension: 37.75" W x 14.5" H x 20" D

Construction: 20 & 22 ga cold rolled steel

Finish: Baked on powder coat available in 18 colors.

FEATURES

- Perfect at eye level or higher, the ideal 'top cabinet' in a stack
- Includes hardware for connecting cabinets when stacking
- A small wire way keeps you connected
- Provides dust-free versatile storage opportunities
- For extra security, locks are available.

MATCHING CABINET

CABDR16 shares the dimensions of CABSLD16, a sliding door module.



NOTE: CABDR16 has reverse stacking dimples instead of levelers and should not be used as a base cabinet unless it's on a caddy. We designed it that way so there are no protruding levelers to stop you from using every inch of storage.



CABSLD16 - Sliding Door Storage Cabinet

A '16 Series' Cabinet



Above All, There's CABSLD16

Drawers max out at eye level. Like the CABDR16, this cabinet works at any height. The sliding doors also make this a safer bet if you choose to leave it open. CABSLD16 is the perfect finishing touch to any stack.

Ideal for home or office for all the items needing a dust-free home. CABSLD16 features a small wiring hole for cables & power cords, making it a great charging station for your rechargeables. Like our CABDR16, this sliding door cabinet can also work with our bridge (BRG38) to float above an open space.

The CABSLD16 is an extra-tall 16.5 inches high. Keep in mind that if you wanted to store books or vinyl record albums, three inches of the center area, where the sliding doors overlap, would not be accessible. The benefit of sliding doors outweighs that obstacle for storing many large items that can be shifted. This sliding door cabinet and CABDR16 have no protruding threads from levelers to stop you from using every inch of storage space.



SPECIFICATIONS

Weight: 40 lb
Cabinet Dimension: 37.75" W x 16.5" H x 20" D
Inside Dimension: 37.75" W x 14.5" H x 20" D
Construction: 20 & 22 ga cold rolled steel
Finish: Baked on powder coat in any of 18 colors

FEATURES

- The perfect 'top cabinet' in a stack - includes connecting hardware
- Reverse dimples for positive positioning with no protruding levelers
- A small wiring hole lets you keep a power bar in the cabinet to charge your rechargeables and allows for innovative use of AV equipment
- Provides dust-free versatile storage opportunities.

MATCHING COMPONENTS

CABSLD16 shares the dimensions of CABDR16, our two door module. This is useful in designing configurations where a common height is desired.

OPTIONS: CADDY / TOPS / BRIDGE

NOTE: CABDR16 has reverse stacking dimples instead of levelers and should not be used as a base cabinet, unless it's on a caddy. We designed it that way so there are no protruding levelers to stop you from using every inch of storage.





Shown with optional shelf (WALLSH12)

A Wall Hanging Cabinet good enough to hang out with the best of them.

WALL24 Cabinet are as easy to install as...



1. Screw the wall hanging bracket firmly to the wall



2. Hang the cabinet onto the bracket



Your configurations are not limited to stacking cabinets. Our WALL24 cabinet fastens easily to your wall, and lets you place additional storage over your setup, while leaving your counter or work surface available, like a kitchen setup. Fact is, this cabinet has made it's way into high-tech kitchens and laundry rooms. Once you get a taste for Can-Am metal cabinets, everything else is kind of ordinary.

The WALL24 cabinet is the same width as our standard modular cabinets, so it lines up perfectly with your cabinets below. At 12" deep and 24" high, it is the ideal size for 'everything else' you want to store. This cabinet makes a great dust-free bookshelf and it can be used for storing CDs or DVDs. Even dishes.

SPECIFICATIONS

- Weight: 40 lb
- Cabinet Dimension: 37.75" W x 24" H x 12" D
- Inside Dimension: 35.75" W x 22" H x 11" D
- Construction: 20 & 22 ga cold rolled steel
- Finish: Baked on powder coat

FEATURES

- Series of tabs accept optional shelves (WALLSH12)
- Provides dust-free, versatile, storage opportunities
- Lines up with all standard width Can-Am cabinets
- Reverse hanger channel welded to the cabinet hooks onto the wall bracket provided for easy installation
- Provides storage above and frees up your counter.

OPTIONS: Wall cabinets feature a series of tabs, that accept our optional, ultra-thin, reinforced wall cabinet shelves.

WALLSH12 - Shelf Weight - 7lb Dimension: 35.25" W by 0.5" H by 11" D (Will not fit in any other Can-Am cabinet.)

A '14 Series' Cabinet



Stereo, AV, Electronic Component, Computer, Storage Or Display Cabinet - This Module Can Do It All.

This pullout cabinet is available with a door (FDCAB14) or without a door (CAB14). It is equipped with slots that accept optional pullout or stationary shelves as well as mini drawers. Place shelves or drawers right where you need them. The rear cutouts let you stay connected. Pullout shelves create king-sized keyboard and laptop stations and Mini Drawers turn it into an efficient storage system. It is sized like our 2-Drawer cabinet, MC2D14, and all standard width '14 Series' cabinets. A lock for the flip door is available. Go Configure.

SPECIFICATIONS

- Weight: 34 lb (45 lb as FDCAB14)
- Cabinet Dim.: 37.75" W x 14.5" H x 20" D
- CAB14 Inside : 35.75" W x 12.5" H x 19" D
- FDCAB14 Inside : 35.75" W x 11.5" H x 19" D
- Construction: 18 & 22 ga cold rolled steel
- Finish: Baked on powder coat in any of 18 colors
- Lock: Available as an option for FDCAB14



This TV stand consists of an MC2D14 next to FDCAB14 with a mica top.



Sliders and shelf brackets snap into slots in the cabinet. Shelves and mini drawers snap onto the sliders or brackets



FEATURES

- Series of slots accepts shelves and mini drawers
- Large wiring holes are fitted with plastic bushings
- Provides dust free space efficient storage
- Available with key lock for added safety and security

- Adjustable feet levelers provide stability and lift the cabinet off the floor. Levelers rest in dimples topside for positioning when stacking
- Includes hardware for connecting cabinets when stacking
- Available in a narrow 23.5" width as FC14X24

MATCHING COMPONENTS

CAB14 / FDCAB14 share the dimension of these cabinets. This is useful when designing configurations that meet at a common height.



MC2D14



COM3D14



HFCAB14

OPTIONS: WHEELS / CADDY / LEGS / TOPS / PULLOUT SHELF / STATIONARY SHELF / MINI DRAWER

Pullout Cabinet CAB20 / FDCAB20 with Flip-Door

A '20 Series' Cabinet

Stereo, AV, Computer, Home Theater, Liquor, Storage or Display Cabinet - Our most popular pullout cabinet does it all!

FDCAB20 with a flip-door or CAB20 without a door are as versatile as your imagination. FDCAB20 is ideal to keep sensitive stereo, AV or computer equipment dust-free and out of sight. For extra security and peace of mind, an optional key lock is available.

These cabinets are equipped with a series of slots that accept our optional pullout and stationary shelves as well as mini drawers. Place shelves, keyboard stations or mini drawers right where you need them. The rear wiring holes are fitted with plastic bushings or solid caps.



Sized like our three drawer cabinet (MC3D20), the CAB20 is the perfect cabinet to add to any configuration. Speaking of drawers, this cabinet will hold up to six mini drawers. It is also available in a narrow 23.5" width as FC20X24.

SPECIFICATIONS

- Weight: 39 lb (54 lb as FDCAB20)
- Cabinet Dim.: 37.75" W x 20.5" H x 20" D
- CAB20 Inside : 35.75" W x 18.5" H x 19" D
- FDCAB20 Inside : 35.75" W x 17.5" H x 19" D
- Construction: 18 & 22 ga cold rolled steel
- Finish: Baked on powder coat in 18 colors
- Lock: Available as an option for FDCAB20

Sliders and brackets snap into slots on cabinets. You choose where.



Shelves and mini drawers snap onto the brackets or sliders.

FEATURES

- Room for lots of standard components or oversized items
- Series of slots accepts shelves and mini drawers
- Large wiring holes fitted with plastic bushings or caps
- Can hold 6 mini-drawers, great for displaying collections
- Steel is recyclable so it will never end up in a landfill
- Adjustable feet levelers provide stability and lift the cabinet off the floor. The levelers rest in dimples topside when stacking
- Includes hardware for connecting cabinets when stacking
- Position shelves or drawers exactly where you want them
- Available with key lock for added safety and security.

MATCHING CABINETS

FD / CABD20 shares the dimension of the cabinets here. Useful when designing configurations that line up.



MC3D20

COM2D20

CH2D20

MC2D20

OPTIONS: WHEELS / CADDY / LEGS / TOPS / PULLOUT SHELF / STATIONARY SHELF / MINI DRAWER



Think of it as a CAB20 or FDCAB20 With a 3-Inch Rear Extension



We took our CAB20 body and added a rear extension to accommodate large equipment and related wiring. The extended rear push-out in the CAB20D or the flip-door version provides extra depth for extra large AV equipment or computer CPU's, yet it will still stack and configure seamlessly with other Can-Am modular cabinets. 22 inches of depth in the Flip-door model FCAB20D. A bit more in the open model CAB20D.

Shown above with our optional stationary shelf, ASHELF. The shelf rests on the protruding levelers, making the base level with the front lip of the cabinet and the rear extension.

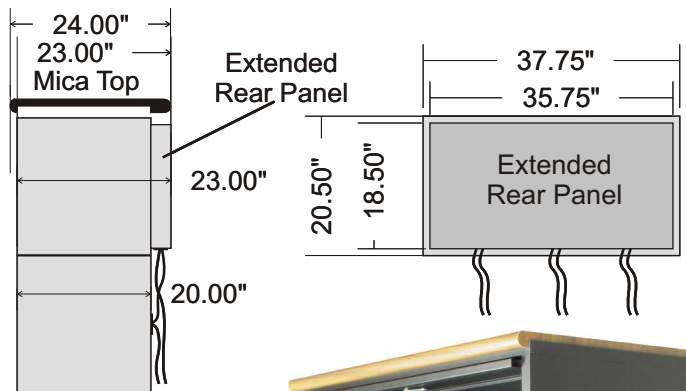
The cabinet features 3 wire-ways at the bottom of the extension, allowing it to be placed right up against a wall.

SPECIFICATIONS

Weight: 45 lb (60 lb as FCAB20D)
 Cabinet Dim.: 37.75" W x 20.5" H x 23" D
 CAB20D Inside : 35.75" W x 18.5" H x 22-23" D
 FCAB20D Inside : 35.75" W x 17.5" H x 22" D
 Construction: 18 & 22 ga cold rolled steel
 Finish: Baked on powder coat
 Lock: Available as an option for FCAB20D

F / CAB20D
(Deeper)

FD / CAB20
(Standard)



MATCHING COMPONENTS
 CAB20D is sized similarly to these



The rear extension is recessed in from the top, bottom and sides to accept tops, stack, and line up with other modules without looking different. The main cabinet body is identical.

FEATURES

- Deep rear extension to accommodate large CPU's and electronics with associated wiring
- Series of slots accepts shelves and up to six mini drawers
- Three wire way cutouts at the bottom of the extension allow the cabinet to sit against a wall
- Extension is recessed in from the top, bottom and sides to accept tops and to stack and to line up with other modules seamlessly. You would not readily notice the extension in a configuration.



OPTIONS: WHEELS / CADDY / LEGS / TOPS / PULLOUT SHELF / STATIONARY SHELF / MINI DRAWER

A '27 Series' Cabinet

It's an open and shut case

This pullout cabinet is available with locking doors (CABDR27) or without doors (CAB27). It is outfitted with a series of slots that accept stationary or pullout shelves and mini drawers, which can be spaced apart to carry small or very large items. It makes a great all-in-one computer station or a wine vault. These cabinets complement our 27 Series line of cabinets, and provide 25" of inside height for shelves or mini drawers. You can place shelves and drawers at virtually any height you want within the cabinet. Rear wiring holes keep you connected.



SPECIFICATIONS

Weight: 50 lb (65 lb with locking doors)
Cabinet Dim.: 37.75" W x 29" H x 20" D
Inside Dim.: 35.75" W x 27" H x 19" D
Construction: 20 & 22 ga cold rolled steel
Finish: Baked on powder coat in 18 colors
Lock: Standard on CABDR29



Wine cabinet - why not? As a stereo cabinet it is wide enough for two stacks of electronic components side by side. And unlike wood cabinets that actually insulate your AV equipment and your wine, Can-Am metal cabinets absorb the heat from your equipment and radiate it away. They don't call Can-Am cabinets cool for nothing!

FEATURES

- Series of slots accept optional shelves and drawers
- Large wiring holes are fitted with plastic bushings or caps
- Available with locking doors as CABDR27
- Provides secure, dust free space efficient storage

- Adjustable feet levelers provide stability and lift the cabinet off the floor. The levelers rest in dimples topside when stacking
- Includes hardware for connecting cabinets when stacking
- Part of the '27 Series' of cabinets to line up in configurations
- 25" of inside height for the tallest of components.

MATCHING CABINETS

CAB27 / CABDR27 share the dimensions of these cabinets. Useful for setups that need to line up.



MC3D27

COM3D27

HFCABD27

FCOM2D27

FCOM1D27

MC4D27

OPTIONS: WHEELS / CADDY / LEGS / TOPS / PULLOUT SHELF / STATIONARY SHELF / MINI DRAWER



One Cabinet - Unlimited Opportunities

This pullout cabinet is available with locking doors (CABDR29) or without doors (CAB29). It is outfitted with a series of slots that accept stationary or pullout shelves and mini drawers, which can be spaced apart to carry small or very large items. It makes a great all-in-one computer station. Pullout shelves create king-sized keyboard and laptop stations that can be positioned anywhere.

CAB29 and CABDR29 match the exact height of any two 14.5" cabinets when they are stacked together, making it a valuable module in configurations. You can mix and match drawers and shelves to create just the solution you need. It is wide enough for two stacks of electronic components side by side. And unlike wood cabinets that actually insulate your AV equipment, Can-Am metal cabinets absorb the heat from your equipment and radiate it away. They don't call Can-Am cabinets cool for nothing!



SPECIFICATIONS

Weight: 50 lb (65 lb with locking doors)
 Cabinet Dim.: 37.75" W x 29" H x 20" D
 Inside Dim.: 35.75" W x 27" H x 19" D
 Construction: 20 & 22 ga cold rolled steel
 Finish: Baked on powder coat in 18 colors
 Lock: Standard on CABDR29

FEATURES

- Series of slots accept optional shelves and drawers
- Wiring holes fitted with plastic bushings or caps
- Provides dust free space efficient storage

- Adjustable feet levelers provide stability and lift the cabinet off the floor. The levelers rest in dimples topside when stacking
- Includes hardware for connecting cabinets when stacking
- 27" of inside height for the tallest of components.

How Does It Stack Up?

It is the exact height of any two 14.5" cabinets shown here, stacked together.



FDCAB14



MC2D14



HFCAB14



COM3D14

OPTIONS: WHEELS / CADDY / LEGS / TOPS / PULLOUT SHELF / STATIONARY SHELF / MINI DRAWER

The Ultimate In Versatility and Space

CAB35 is our largest pullout cabinet. It is outfitted with a series of slots that will accept stationary or pullout shelves and mini drawers, which can be spaced apart to carry small electronic parts or large paint cans. It is the exact height of one 20.5" cabinet and one 14.5" cabinet stacked together, making it a valuable module in configurations. Office server station or home theater command center, AV stereo cabinet or computer station, laptop storage and charging station or parts cabinet - this cabinet can do it all. It is available with locking doors (CABDR35) or without doors (CAB35). As a stereo or AV component cabinet, it is wide enough to handle two stacks of electronic components



CAB35 / CABDR35 lives up to its 35-inch height

It is just the right height for a counter or a walk-up computer station. Our customers have been creating their retail counter system with Can-Am cabinets for over 30 years, and CAB35 / CABDR35 always finds a place. Put it on a caddy, finish it off with a mica top, and you've got the perfect rolling storage workbench for the office, warehouse, garage or workshop. It is equipped with a series of slots that accept our optional pullout or stationary shelves as well as mini drawers. You can mix and match these drawers and shelves to create just the solution you need. It lets you fit more shelves and drawers than any other cabinet, and they can be placed at just about any height. Shelves and drawers are sold separately.

SPECIFICATIONS

- Weight: 55 lb (70 lb with locking doors)
- Cabinet Dimension: 37.75" W x 35" H x 20" D
- Inside Dimension: 35.75" W x 33" H x 19" D
- Construction: 20 & 22 ga cold rolled steel
- Finish: Baked on powder coat available in 18 colors

FEATURES

- Series of slots accepts optional shelves and drawers
- Large wiring holes fitted with plastic bushings or caps
- Ideal height for a counter or walk-up computer station
- 33" of inside height for lots of extra tall components
- Adjustable levelers provide stability and lift the cabinet off the floor. They rest in dimples topside when stacking
- Includes hardware for connecting cabinets when stacking
- Provides safe, secure, dust-free storage.



How Does It Stack Up?

CAB35 / CABDR35 is the size of one 14.5" cabinet and one 20.5" cabinet stacked together.

Stack one '14 Series' cabinet and one '20 Series' cabinet to line up with a CAB35 or CABDR35.



FDCAB14



MC2D14



HFCAB14



COM3D14



MC3D20



COM2D20



CH2D20



MC2D20



FD / CAB20

OPTIONS: WHEELS / CADDY / LEGS / TOPS / PULLOUT SHELF / STATIONARY SHELF / MINI DRAWER

Pullout Cabinet Accessories For Standard 37.75" Wide Cabinets

All Pullout Cabinets have a series of slots that accept our optional shelves and mini drawers. The sliders and shelf brackets snap into the slots and the shelves and drawers snap onto the brackets or sliders.

Whether you need a sturdy rollout shelf for electronics, a keyboard or laptop station, or simply an on-demand work surface or desk, the pullout shelf is it. A positive friction catch keeps shelves and mini drawers from rolling out accidentally. Our mini drawers can be outfitted with dividers and backstops.



Shelves & Drawers Are Optional

This way you get to configure your cabinet anyway you like. Whatever you want, wherever you want it. You can mix and match shelves and drawers in the same cabinet. Levelers protrude through the bottom of all pullout cabinet floors and a shelf that creates a false floor is recommended. A stationary base shelf (ASHELF) rests on the levelers and creates a false floor flush with the bottom lip of the cabinet. A pullout shelf or drawer will do the job as well.



PUSHE - Our pullout shelf makes wiring your components a breeze. It also makes an amazing laptop or keyboard station. Use it anywhere you need a roll out work station and relax - it is rated for over 60 pounds. This is our most popular pullout accessory.

SPECIFICATIONS

Weight: 13 lb / Capacity: 60 lb
Dimension: 35.25" W x 2" H x 18" D
Sliders: Heavy duty full extension

FEATURES

- Full extension heavy-duty sliders
- Position shelves anywhere
- Wire space between shelf and cabinet.

ASHELF - This adjustable stationary shelf or base shelf takes up only 1" of height in your cabinet, so it can be useful in tight situations. As a base shelf, ASHELF rests on the levelers and creates a false floor that is flush with the bottom lip of the cabinet.

SPECIFICATIONS

Weight: 10 lb / Capacity: 50 lb
Dimension: 35.25" W x 1" H x 18" D
Finish: Baked on powder coat

FEATURES

- Shelf brackets included
- Position shelves anywhere
- Wire space between shelf and cabinet.

MINIDRW - Our 2" high Mini Drawers are great for smaller items - but strong enough for whatever will fit. Space them apart to match the height of the product you want to store or display. Six mini drawers will fit in our FDCAB20.

SPECIFICATIONS

Weight: 10 lb / Capacity: 60 lb
Dimension: 34" W x 2" H x 18" D
Sliders: Heavy duty full extension

FEATURES

- Full extension heavy-duty sliders
- Position mini drawers anywhere
- All shelves and drawers are available in 18 colors to match your cabinet.

Levelers protrude through the bottom of all pullout cabinet floors and a shelf that creates a false floor is recommended.

FC14X24 Narrow Flip Door Pullout Cabinet

A Narrow '14 Series' Cabinet

Like all Pullout Cabinets, FC14X24 features a series of slots. Sliders or brackets snap into the slots and optional shelves or mini drawers snap onto the sliders or brackets.

It will carry your electronic components, laptop or printer and can act as a power station for all things that need to be charged. It is sized exactly like our narrow 2 drawer cabinet and will line up with any of our 14.5" high cabinets. FC14X24 holds a single stack of components and has 10.5" of available vertical height when used with a stationary base shelf or 8.5" of available height when a pullout shelf is used. There is a generous wiring cutout at the back. FC14X24 will also accommodate three mini drawers making it a very useful and versatile storage cabinet.

Narrow shelves and mini drawers are sold separately.



Shown here next to M2D14X24, on wheels with metal top

FEATURES

- Flip door keeps electronics dust-free and out of sight
- Flip door is out of the way when the cabinet is open
- Available with key lock for added safety and security
- Series of slots accept optional shelves or drawers
- Provides dust free space efficient storage
- Adjustable feet levelers provide stability and lift the cabinet off the floor. The levelers rest in dimples topside for positive positioning when stacking
- Includes hardware for connecting when stacking
- Large rear wiring cutout fitted with plastic bushing
- Available in 18 powder coat colors.



FC14X24 is available in our standard width version as FDCAB14 and works just like our standard width pullout cabinets, just narrower! Line it up next to our standard '14 Series' cabinets to reach any width or stack FC14X24 with any narrow cabinet to reach virtually any height. Optional pullout and stationary shelves provide the flexibility to create versatile AV or computer setups - with keyboard trays and rollout work surfaces at just the right height. An optional key lock is available. Outfit this cabinet with tops, legs or wheels for mobility.

MATCHING CABINETS

The FC14X24 is the same height and depth as standard width '14 Series' cabinets - MC2D14, HFCAB14, COM3D14, CAB14 and FDCAB14. It shares the exact dimension of M2D14X24, 2-drawer cabinet shown in the picture. This is useful when designing configurations that need to line up.

SPECIFICATIONS

Weight: 30 lb
Cabinet Dimension: 23.5" W x 14.5" H x 20" D
Inside Dimension: 21.5" W x 11.5" H x 19" D
Construction: 18 & 22 ga cold rolled steel
Finish: Baked on powder coat in 18 colors

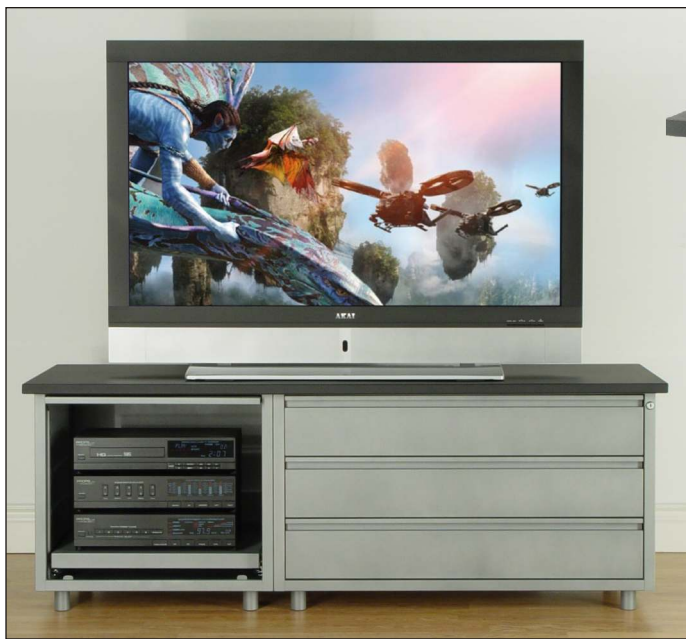
FC20X24 Narrow Flip Door Pullout Cabinet

A Narrow '20 Series' Cabinet

Like all pullout cabinets, FC20X24 features a series of slots. Sliders or brackets snap into the slots and optional shelves or mini drawers snap onto the sliders or brackets. It will carry your electronic components, laptop or printer and can act as a power station for all things that need to be charged. It is sized exactly like our narrow 3-drawer cabinet and will line up with any of our 20.5" high cabinets. FC20X24 holds a single stack of components and has 16.5" of available vertical height when used with a stationary base shelf or 14.5" of available height when a pullout shelf is used. There is a generous wiring cutout at the back. FC20X24 will also accommodate six mini drawers making it a very useful and versatile storage or parts cabinet.

Narrow shelves and mini drawers are sold separately.

FC20X24 is available in our standard width version as FDCAB20 and works just like our standard width pullout cabinets. Line it up next to any '20 Series' cabinet to reach any width or stack FC20X24 with any narrow cabinet to reach the desired height. Optional mini drawers and pullout and stationary shelves provide the flexibility to create versatile AV or computer setups - with keyboard trays and rollout work surfaces right where you want them. An optional key lock is available. Finish it off with a metal or mica top. Add legs for lift or wheels for mobility.



Shown here next to MC3D20, on legs with a metal top

FEATURES

- Flip door keeps electronics dust-free and out of sight
- Flip door is out of the way when the cabinet is open
- Available with key lock for added safety and security
- Series of slots accept optional shelves or drawers
- Provides dust free space efficient storage
- Adjustable feet levelers provide stability and lift the cabinet off the floor. The levelers rest in dimples topside for positive positioning when stacking
- Includes hardware for connecting when stacking
- Large rear wiring cutout fitted with plastic bushing
- Available in 18 powder coat colors.



Above, FC20X24 is on top of an M3D20X24 with a mica top

FC20X24 can hold up to six mini drawers



MATCHING CABINETS

FC20X24 is the same height and depth as standard width cabinets; MC3D20, MC2D20, COM2D20, CAB20 and FDCAB20. It shares the exact dimensions of the following narrow cabinets - M3D20X24, M2D20X24, and CH20X24. This is useful when designing configurations or a desk where things need to line up.

SPECIFICATIONS

Weight: 30 lb
Cabinet Dimension: 23.5" W x 14.5" H x 20" D
Inside Dimension: 21.5" W x 11.5" H x 19" D
Construction: 18 & 22 ga cold rolled steel
Finish: Baked on powder coat in 18 colors

Pullout Cabinet Accessories For Narrow 23.5" Wide Cabinets

All Pullout Cabinets have a series of slots that accept our optional shelves and mini drawers. The sliders and shelf brackets snap into the slots and the shelves and drawers snap onto the brackets or sliders.

Whether you need a sturdy rollout shelf for electronics, a keyboard or laptop station, or simply an on-demand work surface or desk, the pullout shelf is it. A positive friction catch keeps shelves and mini drawers from rolling out accidentally.

Shelves & Drawers Are Optional

This way you get to configure your cabinet anyway you like. Whatever you want, wherever you want it. You can mix and match shelves and drawers in the same cabinet. Levelers protrude through the bottom of all pullout cabinet floors and a shelf that creates a false floor is recommended. A stationary base shelf (ASHELF24) rests on the levelers and creates a false floor flush with the bottom lip of the cabinet. A pullout shelf or drawer will do the job as well.



PUSHE24 - The PUSHE24 pullout shelf is designed to work in our narrow flip door cabinets. It makes wiring a breeze and is ideal for top loading electronics or turntables. Makes a great laptop station, too.

21" W by 2" H by 18" D ~ 9 lb

FEATURES

- Full extension heavy-duty sliders
- Position shelves anywhere
- Wire space between shelf and cabinet.

ASHELF24 - Adjustable Stationary Shelf or Base Shelf. It only takes up 1" of height in your cabinet. As a base shelf, ASHELF24 rests on the levelers and creates a false floor that is flush with the bottom lip of the cabinet.

21" W by 1" H by 18" D ~ 7 lb

FEATURES

- Shelf brackets included
- Position shelves anywhere
- Wire space between shelf and cabinet.

MINDW24 - Narrow Mini Drawers are designed to work in our narrow flip door cabinets. Just the right height for smaller items - but strong enough for whatever will fit. Full extension sliders mean you have access to every inch of space.

20.75" W by 1" H by 18" D ~ 7 lb

FEATURES

- Full extension heavy-duty sliders
- Position mini drawers anywhere
- Available in 18 colors

These narrow width cabinets use narrow shelves and drawers. Because there is no divider between the top and bottom halves of the F2D27X24 and F1D27X24, a pullout shelf, mini drawer, or stationary shelf is required.



FC14X24



FC20X24



F2D27X24



F1D27X24

Levelers protrude through the bottom of all pullout cabinet floors and a shelf that creates a false floor is recommended.



Tops are beautiful and practical. The perfect finishing touch for your configuration or TV stand.



A mica top is a beautiful and durable finishing touch to your cabinet or stack of cabinets. Post-formed mica laminated to wood, similar to kitchen counters, make great working surfaces and distribute the weight of heavier objects and TVs to the frame of the cabinet below.



Mica tops are custom fitted, and require no tools! They are available in single length, for a single cabinet or stack of cabinets, or double length, for side-by-side cabinets. There are tops for 23.5" narrow cabinets (TOP24 or TOP47) and for cabinet combinations (TOP61). All mica tops add 4 inches to the depth of the cabinet, for a total depth of 24 inches. Three inches on one side and one inch on the other. Use the deeper side at the back to conceal stereo wiring or in the front as a counter toe relief. No overhang at the left or right.



VARIETY OF LENGTHS AVAILABLE

TOP38: For One Standard Cabinet
Weight: 18 lb (37-3/4" W by 2" H by 24" D)

TOP75: For Two Cabinets side-by side
Weight: 36 lb (75-1/2" W by 2" H by 24" D)

TOP24: For One Narrow Cabinet
Weight: 11 lb (23-1/2" W by 2" H by 24" D)

TOP47: For Two Narrow Cabinets side-by-side
Weight: 22 lb (47" W by 2" H by 21" D)

TOP61: For a Narrow Cabinet next to a Standard Cabinet
Weight: 29 lb (61-1/4" W by 2" H by 24" D)

Why so many lengths? So you can combine modules. For example a 23.5" wide cabinet next to a 37.75" cabinet is 61.25". Our TOP61 is 61.25" wide.

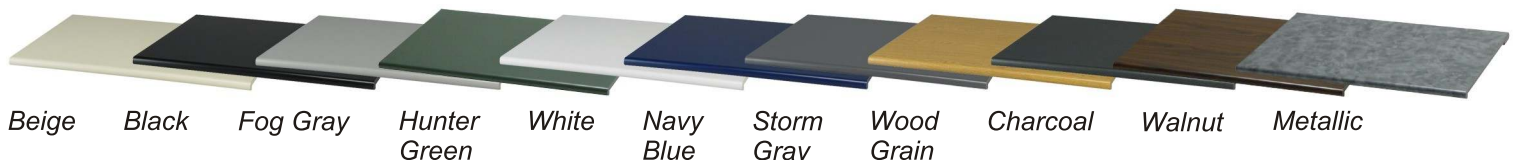
TOP61



FEATURES

- Post-Formed laminate provides an extremely durable surface
- Rounded edges, front and back, are gentle with no sharp corners

- Tops are recess custom fitted - no installation is required
- Transfers the weight of heavy objects to the cabinet frame
- Tops add one inch in height and four inches in depth.





Something From Nothing Is Something

Bridge shelves let you create shelves between stacks of cabinets and give you the freedom of floating cabinets or counter tops. Bridges create shelves that are sturdy, strong, and good looking. They can also be used to float storage cabinets above all, for a very useful and impressive configuration.

Bridges hang between cabinets, or stacks of cabinets, that are at a common height. No assembly or tools are required.

Bridges can also support counter tops. To the left, a bridge shelf is used to float a double length mica top. The empty space it creates produces a very efficient desk.



Bridge Shelves come with "Wing" brackets that overlap the supporting cabinets. Simply position the winged bridge shelf onto the cabinets. Feel free to stack cabinets above the wings.

SPECIFICATIONS

Weight: 13 lb
 Bridge Dimension: 37.75" W x 1" H x 20" D
 Weight Capacity: 80 lb
 Construction: 18 & 22 ga cold rolled steel
 Finish: Baked on powder coat in any of 18 colors

FEATURES

- Can be used as a shelf or cabinet support unit
- Supports standard width cabinets
- Shelf comes with wings and simply hangs between stacks of cabinets of equal height
- No tools or assembly is required
- Top of bridge is flush with supporting cabinets

OPTIONS:

MICA TOP / CABSLD16 / CABDR16

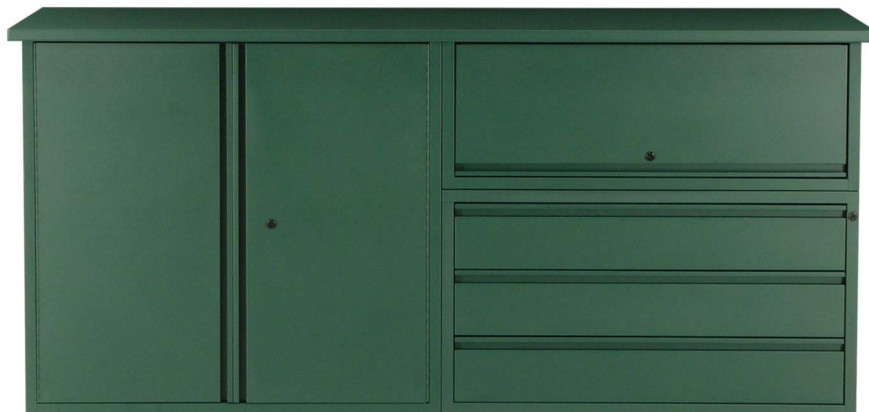
SAFETY NOTE:

- Bridges **cannot** be used in conjunction with wheels or caddies. Limit legs to 2" or 3" height
- Bridges are **not** intended to support any Drawer Cabinets. They are only intended to support CABSLD16 or CABDR16 cabinets.



Metal Tops are available in 18 powder coat colors to match your cabinets perfectly.

Our Metal Tops feature a one inch overhang at the front and sides, consistent with the look and feel of fine furniture. It is flush at the back, so your setup can be placed right up against a wall. Simply place the top over your cabinets for a snug fit that adds virtually no height to the setup. It really pulls your configuration together. It makes for a stunning top for your TV stand, credenza or AV furniture. Metal is also your most eco-friendly choice.

MTOP77

Not sure when to use a Mica Top versus a Metal Top?

Metal Tops are available in the same 18 powder coat colors as our cabinets, so they match perfectly. Mica Tops are only available in 11 mica laminates, laminated to wood. Mica tops are flush with the end of the cabinet it sits on, with no side overhang. This allows them to be used in L-Shaped or U-Shaped setups, like the one at left, where you want to butt a taller stack next to a lower setup. The side overhang on the metal top would get in the way. Mica Tops are a bit more scratch resistant. If you plan to use it as a working counter surface, you should consider Mica. Metal tops are durable enough for most things.

**MTOP49**

FEATURES

- Tops are recess custom fitted - no tools or installation required
- Made from 18 ga cold rolled steel with polished welded frame
- Transfers the weight of heavy objects to the cabinet frame
- Metal tops add no height to setups - metal thickness only
- Durable baked on powder coat finish available in 18 colors.
- Eco-friendly steel is recyclable - it won't end up in landfill
- Ties your configuration together as one unit - looks great!

Metal Tops are available in a variety of sizes

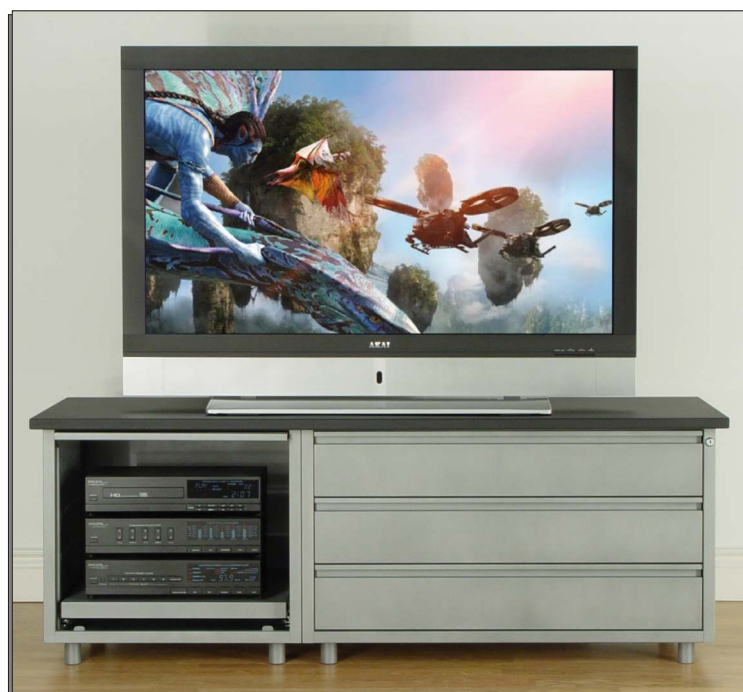
MTOP40: For one standard width cabinet (39-3/4" W x 1" H x 21" D)

MTOP77: For two standard width cabinets side-by-side (77-1/2" W x 1" H x 21" D)

MTOP26: For one narrow cabinet (25-1/2" W x 1" H x 21" D)

MTOP49: For two narrow cabinets side-by-side (49" W x 1" H x 21" D)

MTOP63: For a narrow cabinet next to a standard width cabinet (63-1/4" W x 1" H x 21" D)

**MTOP63**

MDTOP - Metal Desk / Bar Top

Designing the ultimate desk is as easy as choosing your desk pedestals and topping them off with a matching metal desk top. Choose your color around your decor and your pedestals around your wish list. This desk top will pull it all together. Indulge yourself with a desk surface thirty inches in depth and over six feet in width. A nine inch rear overhang will cater to your guests so they can also share in the performance. Go Configure!

MDTOP - Metal Desk / Bar Top

Dimensions: 77-1/2" W by 1" H by 30" D (The additional height it adds to the desk is negligible)

Weight: 40 lb

Construction: 20 Gauge Steel



HF27X24



M3D27X24



CH27X24



M4D27X24



F2D27X24



F1D27X24



DESKMP - Desk Modesty Panel
Panel Dimension: 37"W by 27"H by 1"D

Two inch legs on any 27" Series Cabinet will bring your desk height to the standard 29". Choose any height by your choice of legs. And the choices don't stop there. Without legs, this desk would top off at 27" - the perfect height for a keyboard or laptop station.

The MDTOP is also very cool on top of our standard width cabinets. Here the rear overhang accommodates bar stools. It makes for a very exciting and well equipped bar which is always at the center of the action. Go Configure!



TTOP40 - Metal Table Top

Metal Table Tops are available in 18 powder coat colors, to match or complement your cabinets.

Our Metal Table Top features a one inch overhang on all sides and is used with cabinets or stacks of cabinets placed back-to-back. The top drops down over the cabinets for a snug fit that keeps everything together and adds virtually no height to the setup.

Whether you are looking to create a coffee table with incredible storage opportunities or the ultimate 'island' style setup, this is your top.

TTOP40 makes a great coffee table. Simply choose two cabinets and put them back to back. The top drops down over the cabinets and holds them together. Run out of space for your CDs and DVDs? It is perfect for your remotes, magazines, wireless game controllers, photo albums, or anything else you need to store!



How About A Storage Island Work Station?

Gather 'round. This TTOP40 will cap off an incredible storage opportunity. Stack cabinets together with a TTOP40 over them and you get massive storage plus a stand up conference center. And whatever supplies you need are right there. Need a file? Here it is. Whatever you want wherever you want it.

An Island Paradise You Get To Hang Out At

Choose your modules around your needs. Get out your wish list and design a power work center for everything and everyone. It wouldn't be paradise if you didn't get to design it module by module.

Choose from a huge array of modules

This setup pictured above tops out at 37 inches. 35" without the 2" legs. The other side could have any 14.5" cabinet and any 20.5" cabinet - or it could have one CABDR35 which is also 35 inches in height. Go Configure!



CABDR35

Stack one cabinet from each row to reach a comfortable 35-inch overall height.



HFCAB14



MC2D14



FDCAB14



COM3D14



FDCAB20



COM2D20



MC3D20



CH2D20



MC2D20

FEATURES

- Tops are recess custom fitted - no installation required
- Construction: 18 ga cold rolled steel

- Transfers the weight of heavy objects to the cabinet frame
- Metal Tops add no height to setups - metal thickness only
- Finish: Baked on powder coat, available in 18 colors.

Heavy-Duty Caddies - 24 / 38 / 47 / 61 / 75

These industrial strength caddies are designed for single cabinets or stacks of cabinets that may undergo constant movement. Even if you want just one cabinet now, you may want to consider getting a caddy instead of wheels so you can add more in the future, since wheels are designed to support a single cabinet only.



Want a Caddy but rather not see it? Check out our Caddy Wraps

CADDY24 - Narrow Single Length Caddy

For one narrow cabinet or one stack of narrow cabinets.
23.5" W x 6" H x 20" D ~ 24 lb

CADDY38 - Single Length Caddy

For one standard width cabinet or one stack of standard width cabinets.
37.75" W x 6" H x 20" D ~ 34 lb

CADDY47 - Double Length Caddy

For two narrow cabinets or stacks of narrow cabinets side by side.
47" W x 6" H x 20" D ~ 40 lb

CADDY61 - Double Length Caddy

For a standard width cabinet, or stack, next to a narrow cabinet or stack.
61.25" W x 6" H x 20" D ~ 50 lb

CADDY75 - Double Length Caddy

For two standard width cabinets or two stacks of cabinets, side by side.
75.5" W x 6" H x 20" D ~ 52 lb



Caddies provide lift and mobility. Our Heavy Duty Caddies feature flat-plate heavy duty wheels, bolted to a welded undercarriage. Two wheels lock with step-on levers. Caddies are designed to move cabinets around. They are not intended to move cabinets as in house-to-house moving. When changing locations, cabinets should be emptied and moved individually.

FEATURES

- Heavy duty construction
- Flat-plate heavy duty wheels bolted to a welded undercarriage
- Two step-on positive locking front wheels
- Corner lips keep your base cabinets firmly seated
- Recessed wheels allow caddies to butt up to one another
- Safety brackets that mechanically link stacked cabinets are provided
- Raises cabinets to safety in the event of water intrusion
- Lifts cabinet up six inches making the bottom drawer more accessible
- No assembly required. Simply set the cabinet on and wheel them away.

SPECIFICATIONS:

Construction: 18 & 20 ga cold rolled steel

Finish: Baked on powder coat in 18 colors to match cabinets

CAPACITY:

Caddies with 4 wheels / up to nine drawers high / not exceeding 800 lb.

Caddies with 6 wheels / up to six drawers high / not exceeding 1,200 lb.

Remember to lock all cabinets before moving them.



All Caddies are available with black wheels at an additional charge. Please see price list for details.



Finish off your caddy in style

If you would like the convenience of a heavy duty caddy, but would rather not see it, this wrap is for you. Color matched to your cabinets, the Caddy Wrap converts your Caddy into a more permanent looking base. The caddy wrap is form fitted to your caddy and requires no tools or assembly. It simply snaps into place.



CADWRAP - For single length caddy CADDY38

That's a Wrap

SPECIFICATIONS:

Weight: 8 lb / Dimension: 38" W x 6" H x 20.5" D / Construction: 18 & 20 ga cold rolled steel / Finish: Baked on powder coat



CADWRAP2 - For double length caddy CADDY75

SPECIFICATIONS:

Weight: 14 lb / Dimension: 76" W x 6" H x 20.5" D / Construction: 18 & 20 ga cold rolled steel / Finish: Baked on powder coat

Back Saver or Mobile AV Cart

No more bending to get to the bottom drawer. No more carrying accessory items around either. Load it all on to this elevated caddy and bring it along. The perfect mobile AV center. From schools to boardrooms, bedrooms to dens. This heavy-duty elevated caddy will rise to the occasion. It raises your cabinet by 20.5 inches and will carry whatever fits in a 14" by 20" space below. Really big toaster oven size.

We've seen this elevated caddy used for so many things, we don't even know where to begin. Your only limit is your imagination.



SPECIFICATIONS:

Weight: 48 lb
Dimension: 37-3/4" W x 20-1/2" H x 20" D
Shelf Space: 35-3/4" W x 14" H x 20" D
Capacity: 2 Cabinets not exceeding 600 lb when loaded
Construction: 18 & 22 ga cold rolled steel
Finish: Baked on powder coat

FEATURES

- Raised lip keeps your cabinet firmly seated
- Takes your cabinet to new heights - 20.5" above
- Space below for whatever fits in a 14" by 20" space
- Positive locking front wheels lock with step-on levers
- Safety brackets that mechanically link stacked cabinets are provided when multiple cabinets are ordered
- Flat plate wheels are recessed to allow multiple elevated caddy setups to butt up to each other.

CADEL38 - Elevated Caddy with Standard Plated Wheel Set

CADEBK38 - Elevated Caddy with Black Wheel Set



The elevated caddy is available with an optional powder coated black wheel set. This option is popular with many of the darker color cabinets.



LEGS put Can-Am cabinets on a pedestal. They raise the cabinet and provide a more conventional furniture feel. Metal (LEGSM) or wood (LEGSW) legs are available in a variety of heights so you can set the precise height of your cabinet.



LEGSW - Screw-In Wood Legs

Legs provide a toe recess as well as lift. Wood legs are best suited to lift the cabinet in the event of water intrusion - something to consider if you are placing your cabinets in a basement or an area prone to flooding. 5 sizes let you choose the precise positioning of your TV, computer monitor, or simply the overall height of your configuration.

SPECIFICATIONS:

Material: Hard wood stained metal tipped Length: 2, 3, 4, 5 or 6 inches

FEATURES

- Legs replace leveling feet on most cabinets
- 5 lengths let you raise the cabinet and choose a precise height.

LEGSM - Screw-In Metal Legs

Metal legs are color matched to your cabinets and are also available in 5 heights. Metal legs replace the levelers found on most Can-Am cabinets. The removed leveling feet then screw into the metal legs, allowing you to level and stabilize your cabinet. This is especially important for large stacks of cabinets on uneven floors.

SPECIFICATIONS:

Material: 18 & 22 ga cold rolled steel Length: 2, 3, 4, 5, or 6 inches
Finish: Baked on powder coat in 18 colors to match your cabinets

FEATURES

- Metal Legs come with levelers to allow precise leveling of your cabinet or configuration
- LEGSM are color matched to your cabinet
- 5 sizes let you raise the cabinet or choose the precise height of your configuration.



SAFETY NOTE

If you are stacking three cabinets high, and want them on LEGS, you should use the 2" or 3" heights only.

Most Can-Am cabinets feature adjustable levelers. Metal or wood legs simply replace those levelers.

Nothing Like A Good Set Of Wheels

There's nothing as convenient as wheels to provide rear access for wiring up your equipment or for vacuuming. Wheels will let you point your TV where you want it, or move it from room to room. Positive locking wheels keep things nice and steady.



WHEELS simply replace the levelers that come on most Can-Am cabinets. They are rated for up to 350 pounds and are intended to carry no more than one cabinet. Wheels lift your cabinet off the floor and add two inches in height.

SPECIFICATIONS:

Material: Plastic Height: 2" Weight: 0.5 lb

FEATURES

- provide 2 inches of lift and mobile convenience
- Wheels simply replace levelers on most Can-Am cabinets
- Set of 4 wheels include 2 locking and 2 non-locking.

SAFETY NOTE

If you are stacking cabinets, you should use a heavy-duty caddy. See the CADDY page for more details.

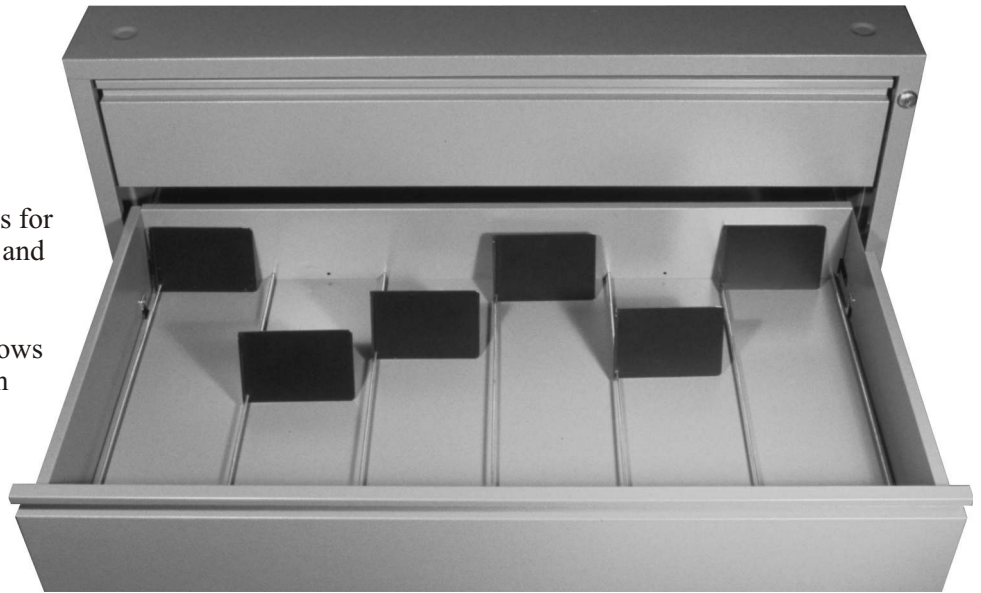


DIVBS12 - Set of 12 Dividers & Backstops
DIVBS18 - Set of 18 Dividers & Backstops
DIVBS24 - Set of 24 Dividers & Backstops

Divide and Conquer

The Divider and Backstop system creates rows for your CDs and DVDs and keeps them in place and under control, even if the rows are not full.

The system creates six rows for CDs or four rows for DVDs, Blu-ray and VHS tapes. Place them in your drawers label up for easy reading and access. No more twisting your neck to read titles! You need 6 dividers and backstops per drawer for CDs, or 4 dividers and backstops per drawer for DVD, BLU-ray and VHS movies. The backstops glide along the divider rods and self lock.



FEATURES

- Fully adjustable to accept everything from paper and plastic sleeves to slim-line cases and oversized collector sets. No slots to tie you down.
- Backstops glide along the divider rods and self lock
- Polycarbonate backstops won't scratch the powdercoat finish.

SPECIFICATIONS:

Construction: Rubber tipped galvanized steel Divider Rods and injection molded polycarbonate Backstops
Weight: DIVBS12 - 2 lb; DIVBS18 - 3 lb; DIVBS24 - 4 lb



INDX - Index Plates

Index Plates allow you to categorize or index your collection.

The plates simply sit between the media and do not attach to the cabinet or to the dividers. This makes it easy to find what you're looking for or to reorganize when you put new items in your drawer.

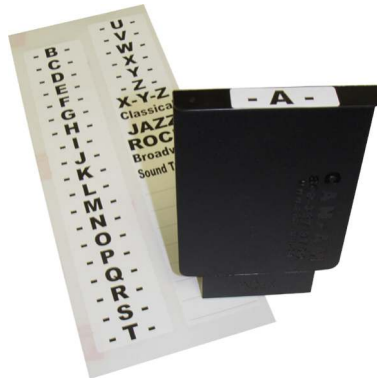
Whether you want to categorize your collection by genre or alphabetically, index plates can help you keep your collection organized.

FEATURES

- Comes with blank and alphabetical labels
- Polycarbonate won't scratch the powdercoat finish
- Each plate is sold individually.

SPECIFICATIONS:

Construction: Injection moulded polycarbonate
Weight: 0.25 lb



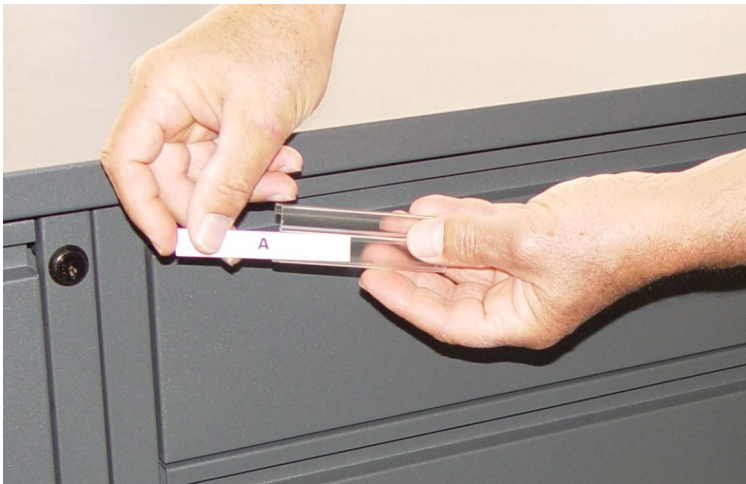
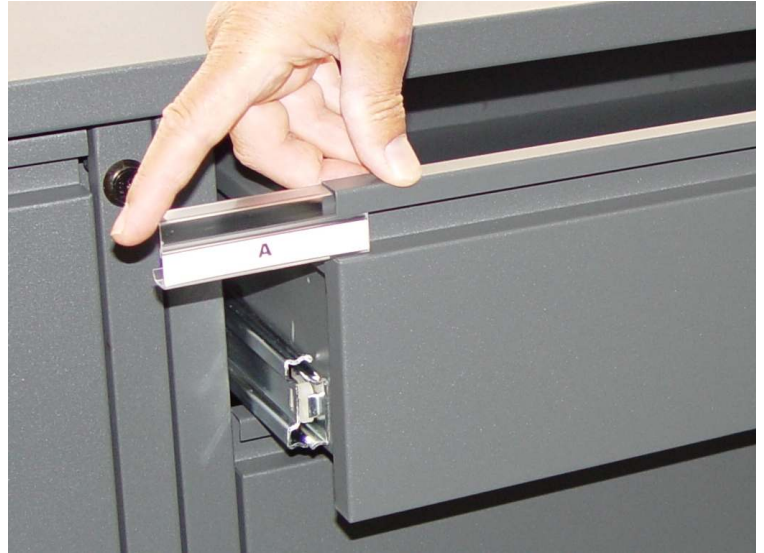
LABEL35 - Label Holder (3.5" wide)

LABEL55 - Label Holder (5.5" wide)

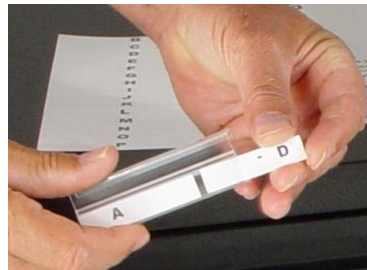
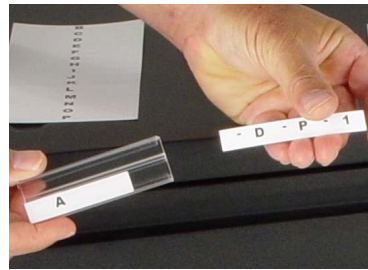
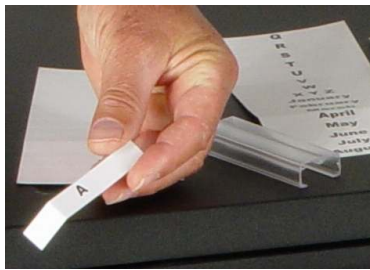
Identify what's inside your drawer at a glance!

Our crystal clear extruded acrylic inserts slide into the finger-pull area of your cabinets. A 1/2" label slides into the holder.

Blank labels are included with each label holder, and a preprinted set with the alphabet and months are included with orders of 12 or more. You can also laser print your own labels. Can-Am Label Holders work with Avery 1/2" Binder Spine Inserts (Avery # 89101), readily available in most office supply stores. Sheets of perforated labels and easy 'MS Word Templates' let you professionally categorize your drawers any way you like.



While you can laser print your own labels or write on the blanks provided, you can also combine the supplied pre-printed labels to identify the start and end point in each drawer. Insert multiple label holders in each drawer handle if desired.



Can-Am label holders provide a discreet yet convenient opportunity to identify what and where things are, without having to open your cabinets.

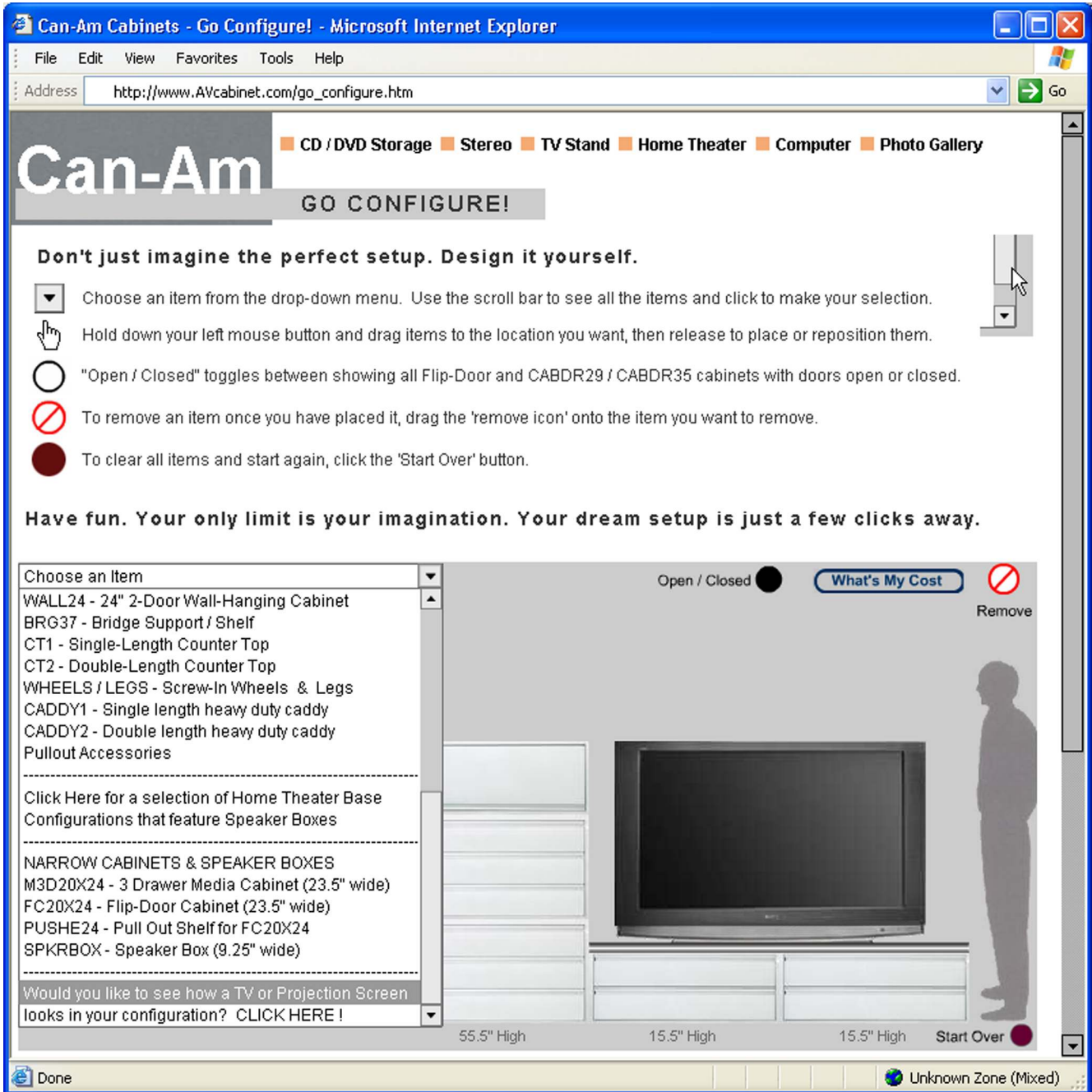
FEATURES

- Available at 3.5" or 5.5" widths
- Utilizes 1/2" spine insert labels
- Crystal Clear extruded acrylic
- Supports Avery Binder Insert Labels (Avery # 89101)
- Works in any Can-Am cabinet, **Drawers or Doors!**





The best place to design your setup is online. Our Flash Drag-N-Drop tool is easy to use. Check it out.



**Your Only limit is Your Imagination.
Go Ahead, Let Your Imagination Run Wild.**

Once you've had a chance to review all the Can-Am cabinets and accessories available it's time to design a setup around your own needs. Your collection. Your TV. Your electronics. Your lifestyle.

Your dream setup is just a few clicks away.

Go Configure at www.Can-Am.ca



Satin Smooth -Steel Strong

Our steel cabinets are finished in a rich powder coating. The powder coat is baked onto the cabinet for a tough, smudge- and scratch-resistant, polyester epoxy finish.

15 Satin finishes - plus White Gloss

White Satin, Navy Blue, Beige, Antique White, Hunter Green, Black, Steel Blue, Plum, Charcoal Gray, Fog Gray, Storm Gray, Director Red, Teal Blue, Chocolate Brown and Metallic Silver Satin come in a lightly textured, satin powder coat finish.

Metallic Steel Gloss

For the look of raw steel, choose Metallic Steel Gloss. The cabinet is protected with a baked on powder coating, made up of pigments that merge in the baking process to resemble raw steel.

Black Satin or Black Textured

Black is available in two finishes, Black Satin and Black Gloss Textured. The texture in the textured version is pronounced, with a high gloss finish.

Steel Strong

Can-Am cabinets are made of steel for strength, durability, and today's lifestyle. A satin powder coat finish has replaced faux wood finishes in TVs and stereo equipment. Metal is becoming the designer's choice for colorful, environmentally friendly furniture.

Can-Am modular steel furniture is strong enough to meet any challenge, soft enough to live in your family room, and smart enough to grow with you.

Environmentally Friendly

The strength and beauty of Can-Am cabinets is steel - a relatively lightweight and environmentally friendly material that will stand up to today's lifestyle challenges. Nothing is stronger or more durable.

A Marriage of Form and Function

A soft exterior. A heart of steel. Can-Am builds storage furniture for today's lifestyle. Our satin cabinets have a sandtex powder coat finish similar to that found on high end TVs and electronics. It's that finish on that TV that makes you want to take it home and put it on a pedestal in your family room. That's the feeling you get with Can-Am Cabinets.

It's not just good enough for your living room. It's *made* for your living room.

See the TV on Can-Am cabinets. You can imagine what the TV base feels like. Its kind of a satiny texture. That's what Can-Am cabinets feel like. They're made for your home. They're made for your lifestyle.



Black Satin



Navy Blue



Director Red



Hunter Green



Chocolate Brown



Metallic Steel Gloss



Black Gloss Textured



Metallic Silver Satin



Plum



Charcoal Gray



Beige



Antique White



White Satin



Teal Blue



Storm Gray



Steel Blue



Fog Gray



White Gloss



At Can-Am, Safety Comes First And Foremost

Can-Am is as committed to safety as we are to producing products of the highest quality.

Safety Interlocking Drawers

Can-Am cabinets are equipped with safety interlocking drawers which allow only one drawer to open at a time, to prevent accidental tipping.

Can-Am cabinets are made of steel so they can provide strength and durability at a reasonable weight.

Twenty gauge cabinets with eighteen gauge stiffeners and slide supports are engineered to provide maximum strength while remaining relatively lightweight. Go ahead, stack Can-Am cabinets with confidence.



Safety through Quality, Design, and Attention to Detail

Can-Am drawers feature an integrated, full length, all steel finger pull. We also use full extension, industrial strength, ball bearing slides. Our pull-out shelves are as strong as our drawers. When stacked, Can-Am

cabinets are inter-connected with **Safety Clamps** for added assurance. Leveling feet ensure that your cabinets are stable and level. This is especially important for the base cabinet of a stack. The retracted feet of upper cabinets rest in recessed dimples found on all cabinet tops, for accurate positioning and added security.



Safety C-Clamps



Stacked cabinets are inter-connected to provide even more safety against accidental tipping. Can-Am Cabinets are linked with C-Clamps that fit into holes found at the back of every cabinet, anchoring cabinets to each other. No tools are required. Be sure to install these clamps when stacking cabinets. If someone else does your setup, make sure they do.

Safety clamps are included with every cabinet.

Say someone inadvertently pulled down on an open drawer. The C-Clamps prevent that cabinet from tipping by anchoring it to the others.



Large wiring holes are fitted with plastic snap bushings

All Can-Am wiring holes are large enough to do the job comfortably. Can-Am wiring cutouts are all outfitted with plastic bushings to keep your wires from contacting the cabinet or chafing.



Key Locks - Keyed alike. One key fits all.

A lock is **standard** on all drawer cabinets for privacy and security. You may never use it, but it's sure nice to know it's there. A locked cabinet is also a safer cabinet. All locks are keyed alike. Black locks are used for black, brown, charcoal gray, navy, or hunter green cabinets and silver locks for all others. **Cabinets can be ordered without locks.**

All drawers lock, for safety, security and kid-proofing. Toddlers and young kids can't get into a locked Can-Am cabinet. Our customers tell us time and time again how our cabinets have saved their valuable collections and often the kids themselves. A locked cabinet is a safer cabinet.



Metal Stereo Cabinets Provide Natural Cooling By Heat Dissipation and Convection

Unlike wood cabinets that actually insulate your AV equipment, Can-Am metal cabinets absorb the heat from your equipment and radiate it away. They don't call Can-Am cabinets cool for nothing! Our flip doors slide out of the way so you can operate your electronics with the doors open, which allows the heated air to rise

Stairwell, Halls and Doorway Friendly Modular Furniture

It's important that your cabinets are stairwell and hallway-friendly. It's no fun carrying big pieces of furniture downstairs, upstairs, around corners or through doorways. It tends to do damage to your body, your furniture and your walls. And if you live in a walk-up, this is your life-saver. Can-Am modular cabinets are relatively lightweight and are carried one module at a time.



Infinitely Expandable

Can-Am cabinets are versatile and expandable. You can't outgrow them. Add to your setup as required. Reconfigure every time you change your TV or your home for that matter. This is your last AV cabinet.



Dust-Free Environment For Your Electronics And Collection

Obviously your electronics need a dust-free home, but what about your media? CD or DVD packages covered in dust is more than annoying. That dust can make its way into your sensitive electronics. Can-Am cabinets provide a dust-free storage solution.



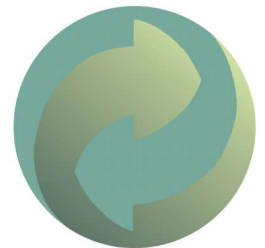
Attention To Detail - A History Of Proud Workmanship Since 1979

In the old days, before a top was fitted to the cabinet wrapper (the panel making up the sides and back), the top of the wrapper was first offset by the thickness of the steel, so that when the two were mated you could run your hand down and not feel any difference or see the unsightly edge of steel. Very few manufacturers do that anymore. We still do it.

Offsetting the wrapper to accept the top seamlessly requires a number of additional production steps and forming tolerances must be critical. But it's worth it. That, among other things, many you can't see, make Can-Am cabinets furniture grade. Whether you put Can-Am cabinets in your basement or living room, you'll have quality cabinets that are built with a long history of proud workmanship.

Eco-Friendly and Recyclable

Steel is the material of choice for environmentally responsible furniture. It is completely recyclable. For an eco-friendly furniture solution, you simply can't do better. If you are looking for ways to do your part for the environment - steel furniture is one way you can help. No trees are cut down and steel cabinets never end up in landfills. In the cabinet manufacturing process there is always cut-off material or scraps. Wood scrap is often carted off to landfills or burned. Metal scraps are valuable and necessary in the production of new steel. Nothing is wasted and nothing gets thrown out. Everything is recycled.



Factory Direct Savings And A Guarantee We'll Be There, When You Need More



We ship directly to our customers from our factory in Toronto and have been doing so since 1979. That gives us the opportunity to provide exceptional value and deal directly with our real customers - you. Count on Can-Am for the highest quality cabinets and an outstanding level of customer service. Depend on Can-Am to be there, when you need us or when you want to expand. Our customer service reps have an average of fifteen years experience and will provide you with professional, courteous and knowledgeable information. Prepare to be impressed.



Black Satin



Metallic Steel Gloss



Antique White



Beige



Navy Blue



Plum



Steel Blue



Director Red



Metallic Silver Satin



Teal Blue



White Satin / White Gloss



Hunter Green



Chocolate Brown



Storm Gray



Fog Gray



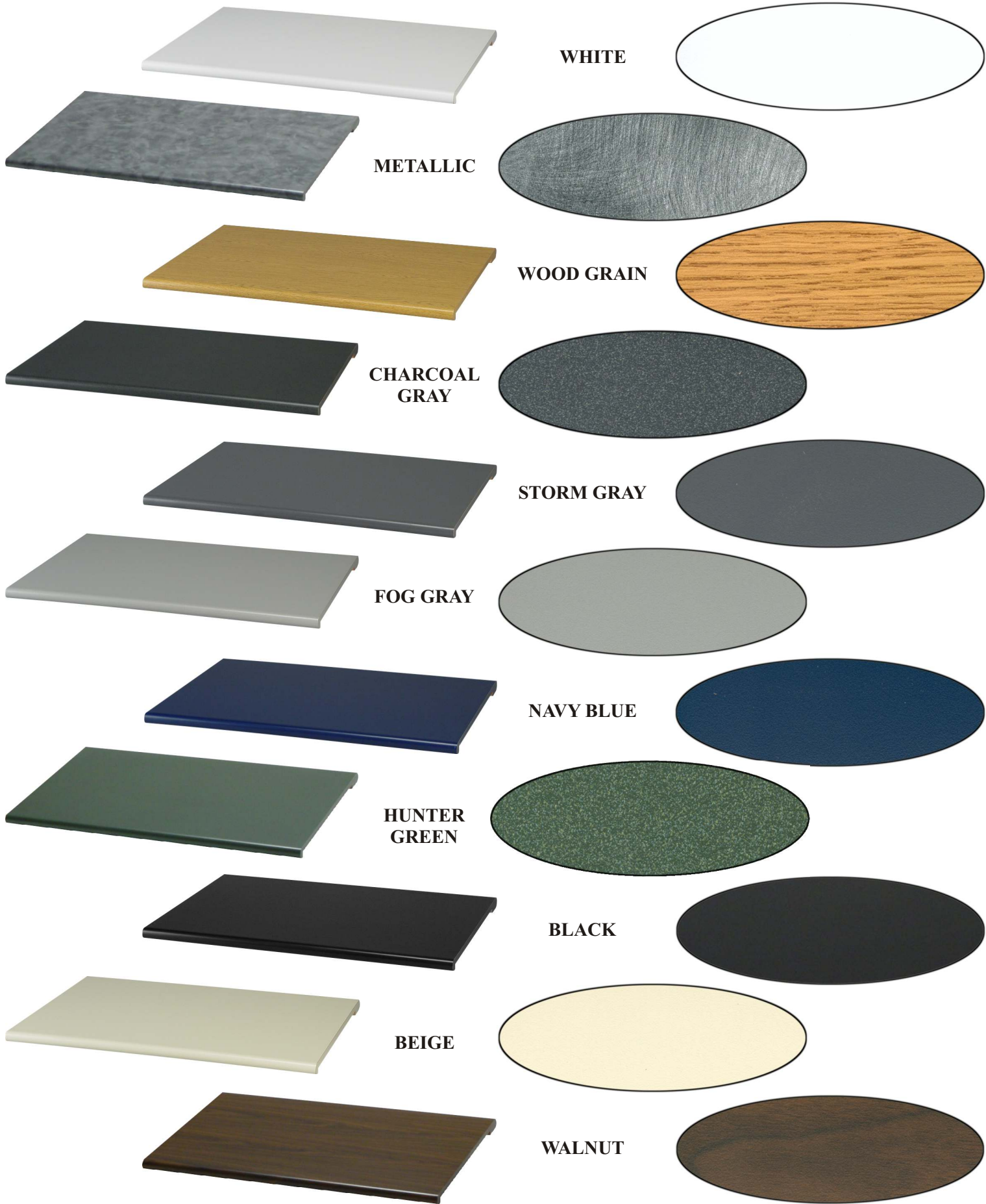
Black Gloss Textured



Charcoal Gray

Samples Are Available

Colors are not always represented accurately on your computer screen or in print. Please feel free to request color samples. Choose a few you would like to see, and we'll be glad to send out actual powder coated metal samples.



Model	Description	Dimensions	Weight	Price
Drawer Cabinets - Standard Width - 37-3/4" (All drawer cabinets come standard with locks, but can be ordered without locks)				
MC2D14	2 Drawer Cabinet with 6" drawers	37-3/4" W by 14-1/2" H by 20" D	70 lb	\$ 475
MC3D20	3 Drawer Cabinet with 6" drawers	37-3/4" W by 20-1/2" H by 20" D	95 lb	\$ 595
MC3D27	3 Drawer Cabinet with 8" drawers	37-3/4" W by 26-3/4" H by 20" D	105 lb	\$ 750
MC4D27	4 Drawer Cabinet with 6" drawers	37-3/4" W by 26-3/4" H by 20" D	120 lb	\$ 795
MC2D20	2 Drawer Cabinet with 9" drawers	37-3/4" W by 20-1/2" H by 20" D	85 lb	\$ 595
HFCAB14	2 Drawer Lateral File Cabinet with 12" hanging file drawers - 14-1/2" high	37-3/4" W by 14-1/2" H by 20" D	73 lb	\$ 595
HFCAB27	2 Drawer Lateral File Cabinet with 12" hanging file drawers - 27" high	37-3/4" W by 26-3/4" H by 20" D	90 lb	\$ 640
CH2D20	2 Drawer Cabinet with one 6" drawer & one 12" hanging file drawer	37-3/4" W by 20-1/2" H by 20" D	85 lb	\$ 570
COM3D14	3 Drawer Cabinet with two narrow 6" drawers & one 12" hanging file drawer	37-3/4" W by 14-1/2" H by 20" D	78 lb	\$ 685
COM3D27	3 Drawer Cabinet with two 6" drawers & one 12" hanging file drawer	37-3/4" W by 26-3/4" H by 20" D	95 lb	\$ 750
Drawer Cabinets - Narrow (All Narrow cabinets are 23-1/2" wide)				
M2D14X24	Narrow 2 Drawer Cabinet with 6" drawers	23-1/2" W by 14-1/2" H by 20" D	50 lb	\$ 475
M3D20X24	Narrow 3 Drawer Cabinet with 6" drawers	23-1/2" W by 20-1/2" H by 20" D	64 lb	\$ 595
M4D27X24	Narrow 4 Drawer Cabinet with 6" drawers	23-1/2" W by 26-3/4" H by 20" D	78 lb	\$ 795
M2D20X24	Narrow 2 Drawer Cabinet with 9" drawers	23-1/2" W by 20-1/2" H by 20" D	60 lb	\$ 595
M3D27X24	Narrow 3 Drawer Cabinet with 8" drawers	23-1/2" W by 26-3/4" H by 20" D	70 lb	\$ 750
HF27X24	Narrow 2 Drawer Lateral File Cabinet with two 12" hanging file drawers	23-1/2" W by 26-3/4" H by 20" D	65 lb	\$ 640
CH20X24	Narrow 2 Drawer Cabinet with one 6" drawer & one 12" hanging file drawer	23-1/2" W by 20-1/2" H by 20" D	60 lb	\$ 570
CH27X24	Narrow 3 Drawer Cabinet with two 6" drawers & one 12" hanging file drawer	23-1/2" W by 26-3/4" H by 20" D	70 lb	\$ 750
Combination Cabinets				
COM2D20	Cabinet with two 6" drawers, a 5" high AV shelf, and a reinforced top	37-3/4" W by 20-1/2" H by 20" D	75 lb	\$ 540
FCOM2D27	Combination Flip Door Pullout Area plus two 6" drawers	37-3/4" W by 26-3/4" H by 20" D	90 lb	\$ 770
FCOM1D27	Combination Flip Door Pullout Area plus one 12" hanging file drawer	37-3/4" W by 26-3/4" H by 20" D	85 lb	\$ 750
F2D27X24	Narrow Flip Door Pullout Area plus two 6" drawers	23-1/2" W by 26-3/4" H by 20" D	65 lb	\$ 770
F1D27X24	Narrow Flip Door Pullout Area plus 12" hanging file drawer	23-1/2" W by 26-3/4" H by 20" D	60 lb	\$ 750
Two Door Storage Cabinets (CABDR16 and WALL24 are available with an optional lock for \$20)				
CABDR16	2 Door Cabinet (Inside Dim.: 35-3/4"W by 14-1/2"H by 19"D)	37-3/4" W by 16-1/2" H by 20" D	36 lb	\$ 385
CABSLD16	Sliding Door Cabinet (Inside Dim.: 35-3/4"W by 14-1/2"H by 19"D)	37-3/4" W by 16-1/2" H by 20" D	40 lb	\$ 430
WALL24	Wall-Hanging 2 Door Cabinet (Inside: 35-3/4"W by 22"H by 11"D)	37-3/4" W by 24" H by 12" D	40 lb	\$ 395
WALLSH12	Stationary Shelf for WALL24	35-1/4" W by 1/2" H by 11" D	7 lb	\$ 55
Pullout Cabinets - Standard Width (Shelves and Mini Drawers are extra)				
CAB14	Pullout Cabinet - 14-1/2" high (Inside Dim.: 35-3/4"W by 12-1/2"H by 19"D)	37-3/4" W by 14-1/2" H by 20" D	34 lb	\$ 310
FDCAB14	Flip Door Pullout Cabinet (Inside Dim.: 35-3/4"W by 11-1/2"H by 19"D)	37-3/4" W by 14-1/2" H by 20" D	45 lb	\$ 420
CAB20	Pullout Cabinet - 20-1/2" high (Inside Dim.: 35-3/4"W by 18-1/2"H by 19"D)	37-3/4" W by 20-1/2" H by 20" D	39 lb	\$ 340
FDCAB20	Flip Door Pullout Cabinet (Inside Dim.: 35-3/4"W by 17-1/2"H by 19"D)	37-3/4" W by 20-1/2" H by 20" D	54 lb	\$ 450
CAB20D	Deep Pullout Cabinet (Inside Dim.: 35-3/4"W by 18-1/2"H by 23"D)	37-3/4" W by 20-1/2" H by 23" D	45 lb	\$ 395
FCAB20D	Deep Flip Door Pullout (Inside Dim.: 35-3/4"W by 17-1/2"H by 22"D)	37-3/4" W by 20-1/2" H by 22" D	60 lb	\$ 475
FDLOCK	All Flip Door Pullout Cabinets (FDCAB14, FDCAB20, FCAB20D) are available with an optional lock			\$ 20
CAB27	Pullout Cabinet - 27" high (Inside Dim.: 35-3/4"W by 24-3/4"H by 19"D)	37-3/4" W by 26-3/4" H by 20" D	48 lb	\$ 375
CABDR27	2 Door Locking Pullout Cabinet (Inside Dim.: 35-3/4"W by 24-3/4"H by 19"D)	37-3/4" W by 26-3/4" H by 20" D	62 lb	\$ 595
CAB29	Pullout Cabinet - 29" high (Inside Dim.: 35-3/4"W by 27"H by 19"D)	37-3/4" W by 29" H by 20" D	50 lb	\$ 375
CABDR29	2 Door Locking Pullout Cabinet (Inside Dim.: 35-3/4"W by 27"H by 19"D)	37-3/4" W by 29" H by 20" D	65 lb	\$ 595
CAB35	Pullout Cabinet - 35" high (Inside Dim.: 35-3/4"W by 33"H by 19"D)	37-3/4" W by 35" H by 20" D	55 lb	\$ 430
CABDR35	2 Door Locking Pullout Cabinet (Inside Dim.: 35-3/4"W by 33"H by 19"D)	37-3/4" W by 35" H by 20" D	70 lb	\$ 660
Pullout Cabinets - Narrow (Shelves and Mini Drawers are extra)				
FC14X24	Narrow Flip Door Pullout Cabinet (Inside Dim.: 21-1/2"W by 11-1/2"H by 19"D)	23-1/2" W by 14-1/2" H by 20" D	30 lb	\$ 420
FC20X24	Narrow Flip Door Pullout Cabinet (Inside Dim.: 21-1/2"W by 17-1/2"H by 19"D)	23-1/2" W by 20-1/2" H by 20" D	36 lb	\$ 450
FDLOCK	All Narrow Flip Door Pullout Cabinets are available with an optional lock			\$ 20

See next page for Cabinet Accessories

Model	Description	Dimensions	Weight	Price
Media Accessories / In-Drawer Accessories				
DIVBS12	Set of 12 Dividers & Backstops		2 lb	\$ 32
DIVBS18	Set of 18 Dividers & Backstops		3 lb	\$ 48
DIVBS24	Set of 24 Dividers & Backstops		4 lb	\$ 64
INDX	Index Plates with blank and alphabetic labels, sold individually		0.06 lb	\$ 1
LABEL35	Drawer Label Holders - 3-1/2" wide, sold individually		0.30 oz	\$ 1
LABEL55	Drawer Label Holders - 5-1/2" wide, sold individually		0.45 oz	\$ 1.50
Shelves & Drawers - For Standard Width Pullout Cabinets				
ASHELF	Stationary Shelf or Base Shelf, includes one set of adjustable clips	35-1/4" W by 1" H by 18" D	10 lb	\$ 80
PUSHE	Pullout Shelf, includes one set of sliders	35-1/4" W by 2" H by 18" D	13 lb	\$ 110
MINIDRW	Mini Drawer, includes one set of sliders	35" W by 2" H by 18" D	10 lb	\$ 115
Shelves & Drawers - For Narrow Pullout Cabinets				
ASHELF24	Narrow Stationary Shelf or Base shelf, includes one set of clips	21" W by 1" H by 18" D	7 lb	\$ 80
PUSHE24	Narrow Pullout Shelf, includes one set of sliders	21" W by 2" H by 18" D	9 lb	\$ 110
MINDW24	Narrow Mini Drawer, includes one set of sliders	20-3/4" W by 2" H by 18" D	7 lb	\$ 115
Mica Tops & Bridge / Shelf				
TOP38	Single Length Mica Top for one standard width cabinet	37-3/4" W by 2" H by 24" D	18 lb	\$ 190
TOP75	Double Length Mica Top for two standard width cabinets side by side	75-1/2" W by 2" H by 24" D	36 lb	\$ 295
TOP24	Single Length Mica Top for one narrow cabinet	23-1/2" W by 2" H by 24" D	11 lb	\$ 190
TOP47	Double Length Mica Top for two narrow cabinets side by side	47" W by 2" H by 24" D	22 lb	\$ 295
TOP61	Double Length Mica Top, to span one narrow & one standard width cabinet	61-1/4" W by 2" H by 24" D	29 lb	\$ 295
BRG38	Bridge Support Unit or Floating Shelf - used as a shelf or with a Mica Top	37-3/4" W by 1" H by 20" D	13 lb	\$ 110
Metal Tops				
MTOP40	Single Length Metal Top for one standard width cabinet	39-3/4" W by 1" H by 21" D	18 lb	\$ 190
MTOP77	Double Length Metal Top for two standard width cabinets side by side	77-1/2" W by 1" H by 21" D	36 lb	\$ 295
MTOP26	Single Length Metal Top for one narrow cabinet	25-1/2" W by 1" H by 21" D	11 lb	\$ 190
MTOP49	Double Length Metal Top for two narrow cabinets side by side	49" W by 1" H by 21" D	22 lb	\$ 295
MTOP63	Double Length Metal Top to span one narrow & one standard width cabinet	63-1/4" W by 1" H by 21" D	29 lb	\$ 295
MDTOP	Metal Desk Top or Deep "Bar Style" Top with 9" rear overhang	77-1/2" W by 1" H by 30" D	40 lb	\$ 325
DESKMP	Desk Modesty Panel	28" W by 26-3/4" H by 1" D	8 lb	\$ 130
TTOP40	Metal Island / Coffee Table Top - covers two standard width cabinets back to back	39-3/4" W by 1" H by 42" D	36 lb	\$ 295
Wheels, Legs & Heavy Duty Caddies				
WHEELS	Set of 4 Screw-In Wheels - for single cabinets only	2" high	0.5 lb	\$ 26
LEGSW	Set of 4 Screw-In Wood Legs - 2", 3", 4", 5" or 6" heights	1-3/8" diameter	0.5 lb	\$ 22
LEGSM	Set of 4 Screw-In Metal Legs - 2", 3", 4", 5" or 6" heights	1-1/2" diameter	0.5 lb	\$ 60
CADDY38	Single Length Caddy, width of one standard cabinet, chrome wheels	37-3/4" W by 6" H by 20" D	34 lb	\$ 220
CAD38BK	Single Length Caddy, width of one standard cabinet, black wheels	37-3/4" W by 6" H by 20" D	34 lb	\$ 260
CADWRAP	Caddy Wrap for CADDY38 / CAD38BK	38" W by 7" H by 20-1/2" D	8 lb	\$ 65
CADDY75	Double Length Caddy, width of two standard cabinets, chrome wheels	75-1/2" W by 6" H by 20" D	52 lb	\$ 295
CAD75BK	Double Length Caddy, width of two standard cabinets, black wheels	75-1/2" W by 6" H by 20" D	52 lb	\$ 355
CADWRAP2	Caddy Wrap for CADDY75 / CAD75BK	76" W by 7" H by 20-1/2" D	14 lb	\$ 110
CADDY24	Narrow Caddy, width of one narrow cabinet, chrome wheels	23-1/2" W by 6" H by 20" D	24 lb	\$ 220
CAD24BK	Narrow Caddy, width of one narrow cabinet, black wheels	23-1/2" W by 6" H by 20" D	24 lb	\$ 260
CADDY47	Double Length Caddy, width of two narrow cabinets, chrome wheels	47" W by 6" H by 20" D	40 lb	\$ 295
CAD47BK	Double Length Caddy, width of two narrow cabinets, black wheels	47" W by 6" H by 20" D	40 lb	\$ 355
CADDY61	Double Caddy, width of one standard & one narrow cabinet, chrome wheels	61-1/4" W by 6" H by 20" D	50 lb	\$ 295
CAD61BK	Double Caddy, width of one standard & one narrow cabinet, black wheels	61-1/4" W by 6" H by 20" D	50 lb	\$ 355
CADEL38	Elevated Caddy, width of one standard cabinet, chrome wheels	37-3/4" W by 20-1/2" H by 20" D	48 lb	\$ 310
CADEBK38	Elevated Caddy, width of one standard cabinet, black wheels	37-3/4" W by 20-1/2" H by 20" D	48 lb	\$ 350